

Our Fleet



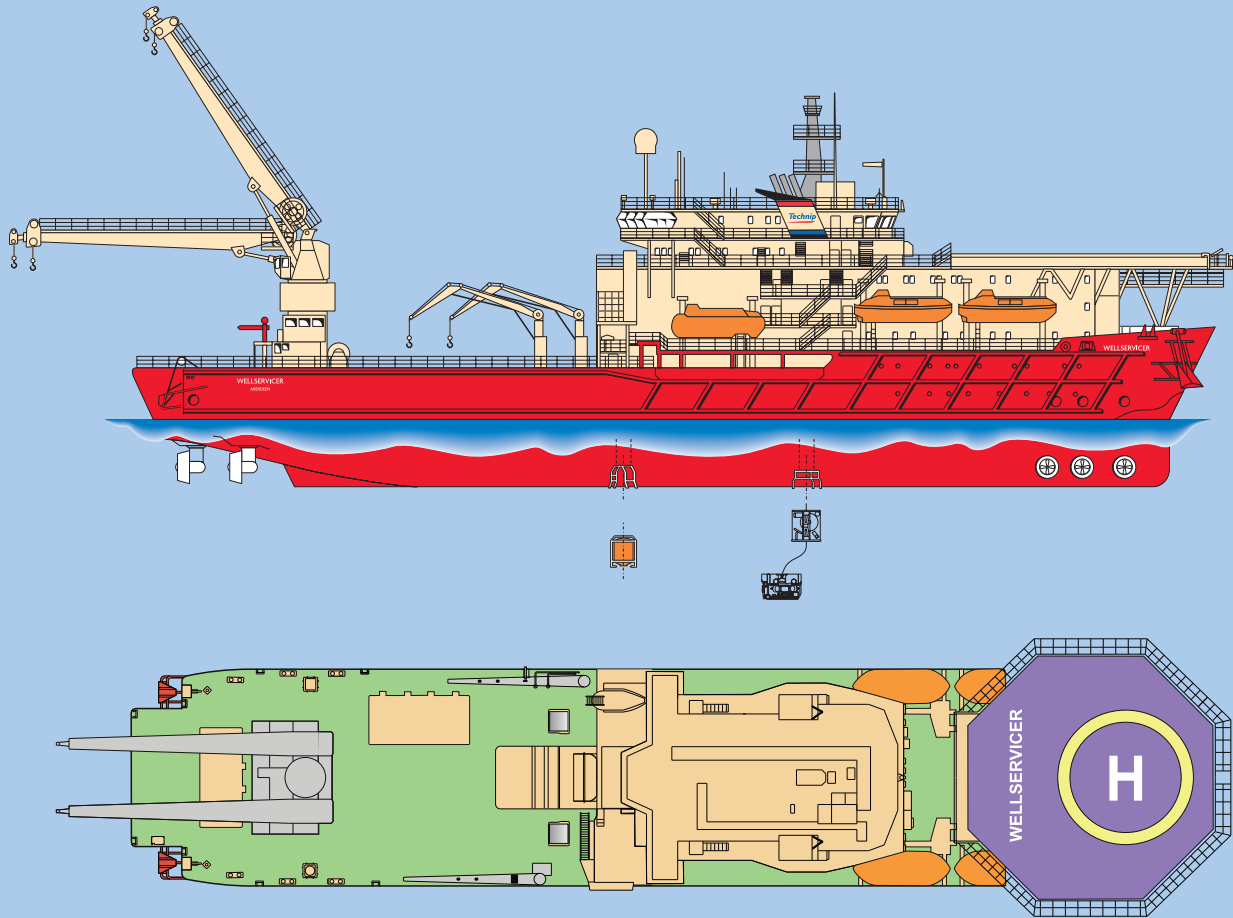
Wellservicer

Versatile multi-role vessel



Technip
take it further.

Wellservicer



The Wellservicer is a versatile multi-role vessel that combines heavy lift capability with either diver or diverless intervention support

Capabilities

The Wellservicer's excellent Dynamic Positioning (DP), station keeping and working weather limits provide a stable platform capable of supporting Vertical Lay System (VLS), carousel or reel mounted equipment. Its innovative design and high degree of sophistication provide a cost-effective alternative for a wide range of specialist services, including hyperbaric welding, flexible flow-line, riser and umbilical laying, installation of structures, piling and mothership support for trenching and diverless subsea equipment.

Cranage

The vessel's heavy lift crane is of a unique design incorporating two independent cranes mounted on a single revolving pedestal. A sophisticated computerised control system enables the two cranes to be operated independently or in tandem.

The cranes have a dynamic rating of 1.3 and a total lifting capacity of 130 Te at a radius of 26 m, when operated in tandem. They are equipped with a sophisticated active heave compensation system where the load is monitored and controlled by independent computers.

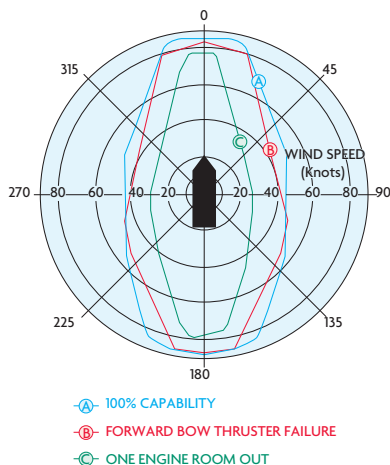
Seakeeping characteristics

The vessel's outstanding success in the subsea construction market is attributable to the innovative mono-hull design with its passive and active stabilising systems, which provide a highly stable base for subsea operations. These active damping and anti-heeling systems limit the vessel's motion to only 1 to 2 degrees of roll in a Beaufort 8 seastate.

Remotely operated vehicles (ROVs)

The vessel is fitted with a Workclass MRV system equipped with state-of-the-art manipulators, sensors and optional tooling packages. It is launched over the vessel's starboard side utilising a LARS system located on the starboard mezzanine deck.

DP Capability Plot



Specifications

Principal Dimensions

Length overall	111.4 m
Length between pp	100.04 m
Breadth moulded	22.5 m
Depth moulded	11.0 m

Operating draft

6.4 m - 7.26 m
(depending on loading conditions)

Displacement

11,935 te at 7.26 m draft

Gross tonnage

9,158 Te

Cranage

Main lifting facility

Twin crane aft, (actively heave compensated)

Main Block:

- single mode 32.5 Te @ 29.5 m radius
- dual mode 65 Te @ 29.5 m radius
- tandem mode 130 Te @ 26.0 m radius
- whip line 10 Te @ 33.5 m radius

Additional lifting facilities

- 2 x Pedestal cranes 5 & 2 Te at 14 m radius
- Provision crane 1.5 Te at 5 m radius

Deck Space

- Above main deck 863 m²
- Below main deck 250 m²
- Working moonpool 7 m x 5 m

4-point mooring available

- 2 forward anchors fitted
- 2 aft anchors available on request

Deck load

5 Te/m²

Max overall 1,140 Te at 1 m above deck

Capacities

- Fuel oil 2,365 m³
- Lube oil 59 m³
- Fresh water 220 m³
- Ballast water 2,383 m³
- Drill water 260 m³

Service air

3 x Atlas Copco 23.6 m³/min each, Pressure 7.0 bar

DP System

- Kongsberg SDP 21
- Kongsberg SDP 11 back-up system - (NMD 3 compliance)

Reference Systems

- 2 x DGNSS
- Simrad HiPAP 500 & 350
- 2 x Lightweight taut wires
- 1 x fan beam

Environmental Regulatory Number

99/99/99

Power plant

- 6 x Wartsila W200 series (2,100 kW)
- Total power production 12,600 kW

Propulsion

Forward

- 3 x KaMeWa Tunnel thrusters 1,342 kW, 18 Te thrust each

Aft

- 3 x KaMeWa Azimuth thrusters 1,720 kW, 37 Te thrust each

Bollard pull

110 Te

Endurance

- Max period between portcalls 67 days (typical without refuelling)
- FW making capacity 50 Te/24 hrs
- Fuel consumption (typical)
 - In port cons. 5 m³/24 hrs
 - Transit 30-50 m³/day
 - DP 20 m³/day

Vessel speed

- Economical 10.5 knots
- Maximum 12.5 knots

Helideck

S92 (strengthened for Chinook)

Accommodation

139 people in 76 cabins

Lifesaving appliances

- Lifeboats (TEMPSC) 4 x 72 person
- (SPHL) 1 x 18 divers + 3 x crew
- Life rafts 12 x 25 person

Diving system

- Depth rating 450 msw
- Current certification 300 msw
- No. in sat. 18
- No. of bells 2
- Bell volume 6 m³ each
- System volume 114 m³ at 200 bar
- Gas storage 21,000 m³
- Reclaim system fitted to both chamber and bells

Flag

British

Call sign

MGGL8

Classification

IA1 Supply Vessel, SF, CRANE, DSV, 111SF, HELDK, E0, DYNPOS-AUTRO

Year built/builder

1989 by North East Shipbuilders Ltd, Sunderland, UK

This MRV system is operated from Dive Control, which is the hub of all vessel subsea operations.

The Wellserver also has a latest generation Observation Class ROV system located on the port mezzanine deck. This "eyeball" system is equipped with state-of-the-art cameras and sensors.

Diving system

Designed with safety and flexibility in mind, the Wellserver is fitted with a saturation diving complex rated to 450 msw, though currently certified to 300 msw, and capable of supporting up to 18 divers under pressure. The system comprises three 6-man twin-lock decompression chambers (DDC) and two 3-man diving bells.

Space is available to fit an additional 6-man DDC as well as a second self-propelled hyperbaric lifeboat, should the need arise. The bells can be operated simultaneously or independently and the system allows

divers to be maintained at different working and decompression depths at the same time.

Divers under pressure can be evacuated by means of a hyperbaric lifeboat positioned on the starboard side of the vessel.

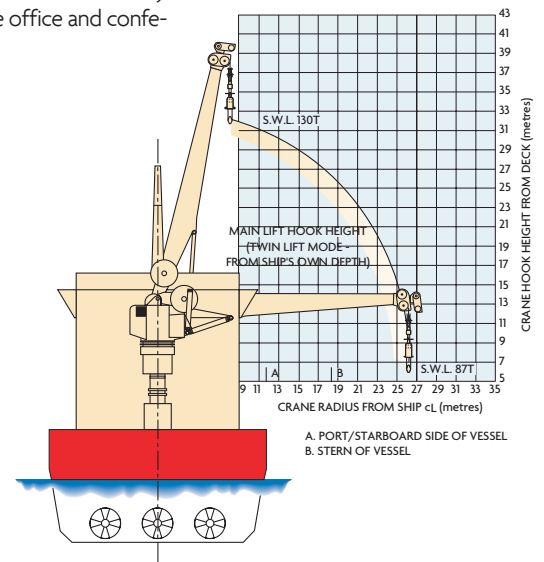
Facilities exist for air diving stations to be installed as required on the port side.

Dynamic positioning system

There is a fully redundant Kongsberg SDP 21 system with six independent reference systems where available. The vessel is able to keep position in the worst weather conditions and has a fully redundant power system. The vessel is also fitted with a Kongsberg SDP 11 back-up system to meet the latest Norwegian NMD Class 3 rules.

Accommodation

The Wellserver's accommodation is spacious and comfortable, designed and equipped to modern European standards and fully air conditioned. Client suites have both dayrooms and bedrooms with easy access to the large office and conference room.





HEADQUARTERS

Technip
89 avenue de la Grande Armée
75773 Paris Cedex 16
France
Phone: +33 (0)1 47 78 24 00

CONTACTS

Marine Assets
Carl HOLMEN
Phone: +33 (0)1 47 78 60 71
E-mail: cholmen@technip.com

Technip Marine Operation Services

Willy GAUTTIER
Phone: +44 (0) 1224 271000
E-mail: wgauttier@technip.com

Technip UK Limited
Enterprise Drive, Westhill,
Aberdeenshire, AB32 6TQ, UK
Phone: +44 (0) 1224 271000
Fax: +44 (0) 1224 271271

www.technip.com