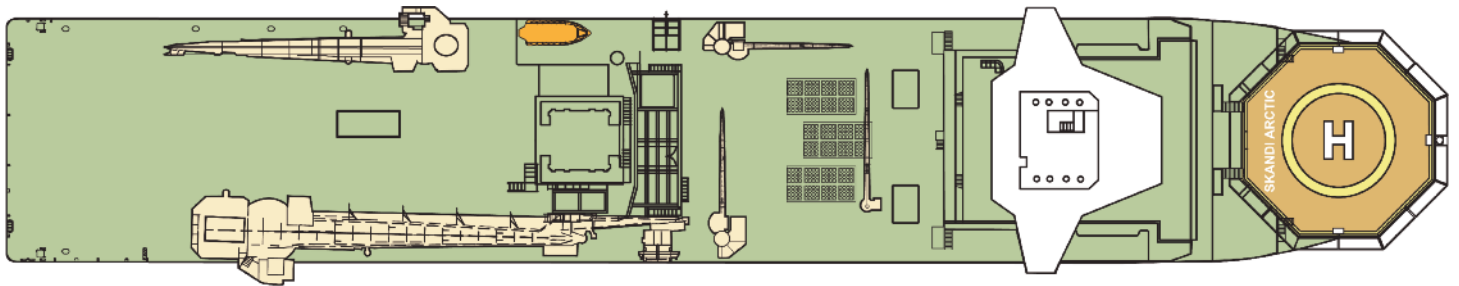
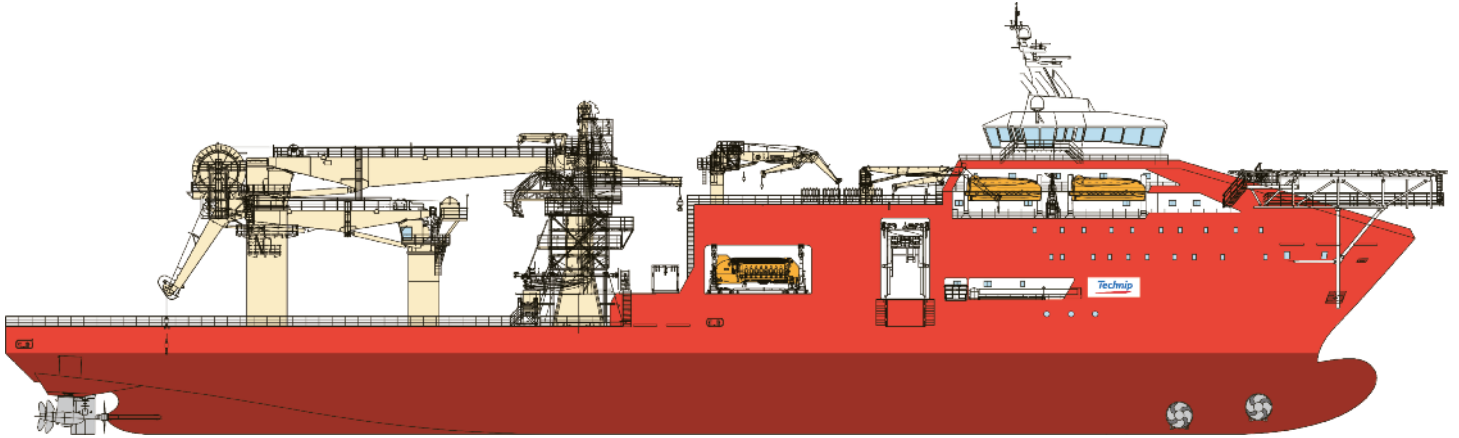


Skandi Arctic



Photograph supplied by STX Europe & Fuglefjellet

Skandi Arctic



The Skandi Arctic is a purpose designed and built diving support and heavy construction vessel suitable for the demanding North Sea market. She is capable of working throughout the year in virtually all sea and weather conditions.

CAPABILITIES

Launched in 2009 the vessel is designed, constructed and certified for worldwide operations. The Skandi Arctic provides services, which include saturation dive support for offshore construction and Inspection, Repair and Maintenance (IRM) operations.

The vessel is one of the most modern diving support vessels in the world thanks to its Hyperbaric Monitoring and Control System (HMCS), which is used to support the 24-man diving chamber complex.

The vessel is designed with special emphasis on good sea-keeping abilities and excellent station-keeping performance.

The Skandi Arctic is environmentally friendly with low fuel consumption and features which comply with DNV CLEAN DESIGN requirements.

Cranage

The main lifting facility is a heave compensated box boom crane, with a lifting capacity of 400 Te at a radius of 11 m (harbour lifts). The vessel also has a knuckle boom crane with a lifting capacity of 58 Te at 11 m radius. Located at the dive workstation are two knuckle boom cranes with a lifting capacity of 5 Te at 14 m radius, which are suitable for offshore and subsea use.

Remotely Operated Vehicles (ROVs)

The vessel is fitted with two Workclass ROV Systems each equipped with heave compensated launch and recovery systems (LARS) and a dedicated hangar. These vehicles are rated to 3,000 mwd and capable of supporting a payload of 3 Te using various work packages. An observation class ROV is installed on deck. The ROV systems are capable of carrying out intensive simultaneous Diving and ROV operations.

Diving Systems

The saturation diving complex, which is rated to 350 msw, consists of two 6-man and four 3-man living chambers and two 3-man diving bells (7 m³ each). The system is supported by two 18-man hyperbaric lifeboats and is fully compliant with Norwegian 'NORSOK' standards.

Pipe Laying Facilities

The vessel can be equipped with VLS (Vertical Lay System), and carousel/reels to install flexible risers and flowlines through the working moonpool.

SPECIFICATIONS

Principal dimensions

Length overall	156.9 m
Length BP	137.7 m
Breadth	27 m
Depth to 1 st Deck	12 m

Draft (design)	6.5 m
Draft (scantling)	8.5 m

Deadweight 11,001 Te at 8.5 m

Cranage

Main lifting facilities

- Type box boom crane
- Main hoist 400 Te at 11 m (harbour lift)
- Auxiliary hoist 30 Te at 46 m
- Active heave compensation

Additional lifting facilities

- 58 Te at 11 m (harbour lift) - Knuckleboom crane
- 5 Te at 15 m - Provision Crane
- 2 x 5 Te - Offshore cranes

Deck space

- 1,700 m² at 10 Te/m²
- Deckload 5,500 Te at 1 m above the deck

Capacities

■ Fuel oil	3,500 m ³
■ Fresh water	1,800 m ³
■ Ballast water	8,700 m ³

Working moonpool

7.2 m x 7.0 m

Dive moonpool

2 off 4.2 m x 3.6 m

DP system

Kongsberg K-Pos dual redundant main system with single K-Pos back up system

Reference systems

- 4 x MRU
- 4 x Gyros
- 4 x Wind Sensors
- 1 x Fanbeam
- 3 x DGPS
- 1 x Seapath
- 2 x HPR
- 2 x Tautwires

Environmental Regulatory Number

99.99.99

Power plant

- 6 x Wartsila 7L32
- Total generated power 19.2 MW

Propulsion

Forward

- 2 x 1.9 MW tunnel thrusters
- 2 x 1.5 MW retractable azimuth thrusters

Aft

- 2 x 3 MW Contra rotating azimuth thrusters
- 1 x center propeller 4 MW
- 1 x flap rudder

Endurance

Fuel consumption (typical)

- In port 5 m³/day
- On DP 30 m³/day
- Transit 60 m³/day

FW making capacity 1 x 25 Te/day
2 x 35 Te/day

Maximum speed

16.5 knots at 5.8 m draught

Helideck

Sikorsky S-92

Accommodation

140 persons in 99 cabins

Lifesaving appliances

- Lifeboats 4 x 70 persons
- MOB 1
- SPHL 2 x 18 divers + 2 x 6 crews

Diving system

- Depth rating 350 msw
- No. in saturation 24
- No. of bells 2
- Bell volume 7 m³
- System volume 347 m³
- Gas storage at 200 bar 36,500 m³
- Reclaim system fitted to bell
- Gas recovery for chambers
- Moonpool aeration system

ROV

1 x 1,500m Observation Class ROV
2 x 3,000m Work Class ROVs

Flag

Bahamas

Classification

DNV 1A1, EO, DYNPOS-AUTRO(IMO III), SF, Dk(+), HELIDK-SH, ICE-C, CLEAN DESIGN, NAUT-AW, Comf V(3)C(3), DSV-SAT

Year built / Builder

2009 / STX Soeviknes

Dynamic Positioning System

The vessel (DP Class 3) is fitted with a dual Kongsberg K-Pos Dynamic Positioning System. DP computer positioning is aided by multiple position reference systems including fanbeam, taut wires, HIPAP and DGPS solutions.

Machinery / Propulsion

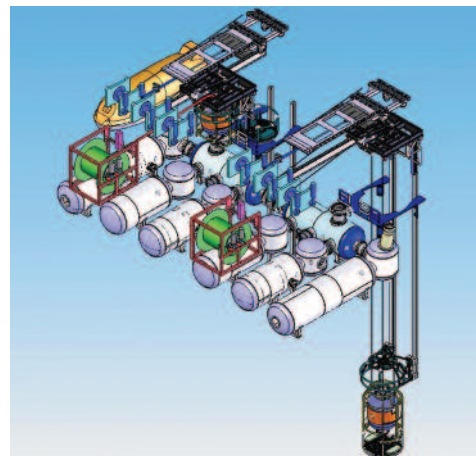
The vessel is powered by 6 Wartsila 7L32 diesel engines, each driving a generator, which provide a total output of 19.2 MW.

Working Deck

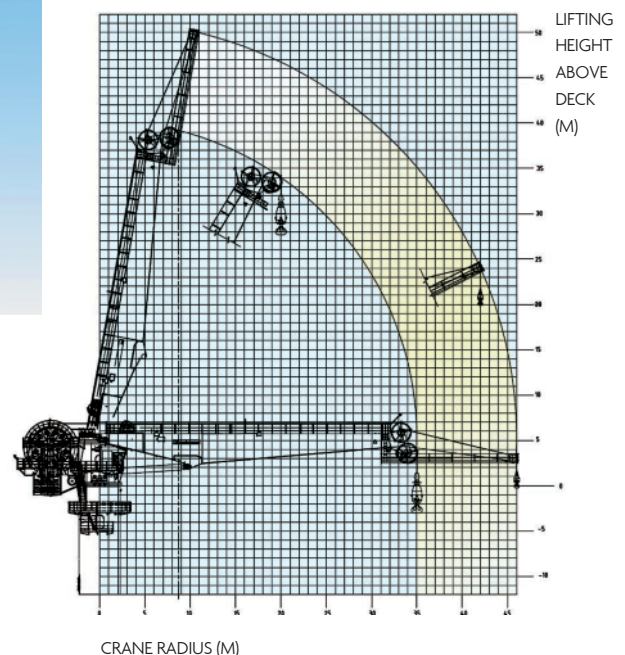
The open deck is 1,700m² with a uniform loading capacity of 10 Te/m². Additional under-deck storage and a lay-down area are also available.

Accommodation

The Skandi Arctic is fitted with 58 single cabins and 41 double cabins, each arranged with separate toilet and shower. Recreational facilities include mess-room, dayrooms, library, cinema and gymnasium. Accommodation is available for 140 people.



24-man dive system



Technip is a world leader in the fields of project management, engineering and construction for the oil & gas industry, offering a comprehensive portfolio of innovative solutions and technologies.

With 23,000 employees around the world, integrated capabilities and proven expertise in underwater infrastructures (Subsea), offshore facilities (Offshore) and large processing units and plants on land (Onshore), Technip is a key contributor to the development of sustainable solutions for the energy challenges of the 21st century.

Present in 48 countries, Technip has operating centers and industrial assets (manufacturing plants, spoolbases, construction yard) on five continents, and operates its own fleet of specialized vessels for pipeline installation and subsea construction.

The Technip share is listed on Euronext Paris exchange and over the counter (OTC) in the USA.

www.technip.com



HEADQUARTERS

Technip

89 avenue de la Grande Armée
75773 Paris Cedex 16
France
Tel. +33 (0) 1 47 78 24 00
Fax +33 (0) 1 47 78 33 40

CONTACTS

Marine Assets

Carl HOLMÉN
Phone: +33 (0) 1 47 78 60 71
E-Mail: cholmen@technip.com

Technip Marine Operations Services

Willy GAUTTIER
Phone: +44 (0) 1224 271000
E-Mail: wgauttier@technip.com

Technip UK Limited
Enterprise Drive, Westhill,
Aberdeenshire, AB32 6TQ, UK
Phone: +44 (0) 1224 271000
Fax: +44 (0) 1224 271271