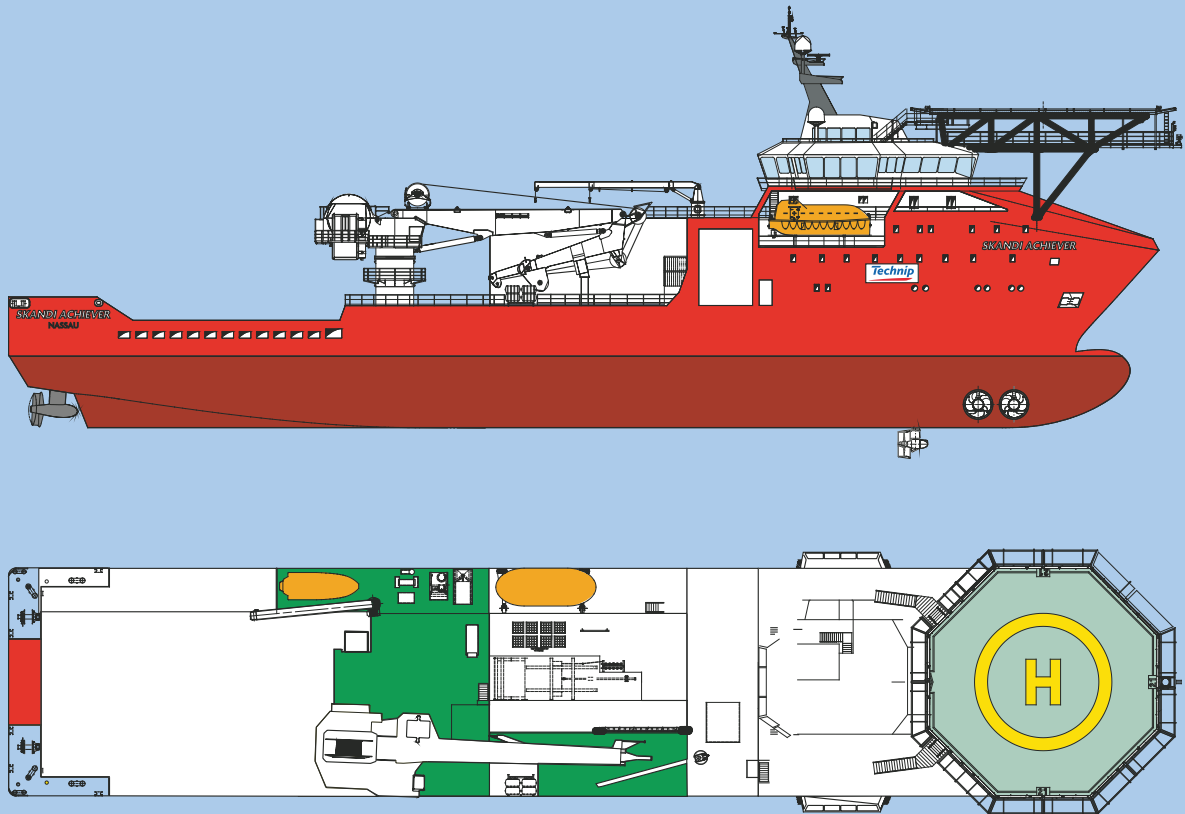


Skandi Achiever

Purpose designed and built diving support vessel



Skandi Achiever



The Skandi Achiever is a purpose designed and built diving support vessel suitable for demanding markets. She is capable of working throughout the year in virtually all sea and weather conditions.

Capabilities

Built in 2007 the vessel is designed, constructed and certified for worldwide trading. The Skandi Achiever provides services, which include saturation dive support for offshore construction and Inspection, Repair and Maintenance (IRM) operations. The vessel is designed with special emphasis on good sea-keeping abilities and excellent station-keeping performance.

The Skandi Achiever is environmentally friendly with low fuel consumption and features which comply with DNV CLEAN DESIGN requirements.

Diving System

The saturation diving system is capable of supporting 18 divers in four, three man living chambers allowing for split level diving or ongoing decompression. The system is rated to 300 msw. There is a further 6 man chamber for decompression and the system is supported by an 18 diver Hyperbaric Life Boat.

The bell accommodates three divers and is launched and recovered through a central moonpool.

The diving bell heave compensation system extends the weather window for diving operations.

Dynamic Positioning System

The vessel is fitted with a fully redundant Kongsberg Simrad SDP 21 dynamic positioning system. There are two HiPAP 500 hydroacoustic transducers, two satellite positioning systems (DGPS), a fanbeam and two vertical taut wire reference systems.

Machinery / Propulsion

The vessel is powered by 6 diesel engines, each driving a generator, which provides a total output of 10 MW.

Accommodation

The modern accommodation for 100 in single and twin berth cabins is designed and equipped to meet DNV comfort class V(3) requirements.

Cranage

The pedestal mounted active heave compensated knuckleboom crane is located on the starboard side of the main deck. It has 140 Te capacity at a radius of 10 m. On the port side of the mezzanine deck there is a subsea knuckleboom crane to support diver operations. It has a capacity of 5 Te at 10 m to 3 Te at 15 m. A small provision crane with a

Specifications

Principal dimensions

Length overall	106 m
Length between pp	94.7 m
Breadth	21.0 m
Depth	8.5 m

Draft	6.6 m
--------------	-------

Displacement	9,434 Te
---------------------	----------

Gross tonnage	7,617 Te
----------------------	----------

Cranage

Main lifting facilities

- Manufacturer National Oilwell Varco (NOV)
- Type Knuckleboom crane
- Main hoist 140 Te @ 10 m
- Auxiliary hoist 10 Te @ 31 m
- Main and auxiliary hoist wire lengths 2,500 m
- Active heave compensation

Additional lifting facilities

- 5 Te @ 10 m Auxiliary - Abas KDE60
- 3 Te @ 15 m Provision - Abas KDE40

Deck space

- Main Deck Area
735 m² of timbered deck @ 10 Te/m²
- Mezzanine Deck Area
153 m² @ 5 Te/m²

Capacities

- Marine diesel oil 1,278 m³
- Lub oil 48.3 m³
- Fresh water 820 m³
- Ballast water 3,820 m³

Moonpool	4.2 m x 4.2 m with aeration
-----------------	-----------------------------

DP system

Kongsberg SDP21

Reference Systems

- 2 x Taut wires
- 2 X HIPAP 500
- 2 x DGPS
- 2 x Seapath
- 1 x Fanbeam

Environmental Regulatory

Number 99,99.99

Power plant

- 4 x 1,665 kW Wartsila 9L20
- 2 x 1,980 kW MAN 9L28/32/H
- Total generated power 10 MW

Propulsion

- Stern
2 x 2.2 MW Azimuth Thrusters

Bow

- 2 x 1.5 MW Tunnel Thrusters
- 1 x 1.5 MW Retractable Azimuth Thruster

Endurance

Fuel consumption (typical)

- In port 3 m³/24 hrs
- Transit 25 m³/24 hrs
- DP 20 m³/24 hrs

FW making capacity 30 Te/24hrs

Maximum speed 15 knots

- Economic Transit Speed 12 knots

Helideck

20 m D-Rating, Sikorsky S92

Accommodation

- 100 persons in 61 single/double cabins
- Plus 18 divers in saturation

Lifesaving appliances

- Lifeboats 2 x 100 persons
- FRC 1
- Life rafts 8 x 25 persons
- Hyperbaric lifeboat 1 x 18 divers + 3 crew

Diving system

- Depth rating 300 MSW
- No in sat 18
- No of bells 1
- Bell volume 6.4 m³
- System volume 174 m³
- Gas storage 18,400 m³ in 40 Kelly Tubes stored at 200 bars
- Reclaim system
- 6 chambers in total (including Transfer Under Pressure) enabling multi-depth operations
- 4 x 3-man chambers for working divers and 1 x 6-man decompression chamber

Workstations

2 x diver workstations (port and starboard) aft of the diving bell moonpool to support Diving Operations

3 x dedicated reeled services including air line, subsea hydraulics and subsea burning facilities

ROV

- 1 x Observation Class ROV
- 1 x Perry Slingsby 3000 m rated TXLS 150 HP WCROV

Survey Spread

- Winfrog Navigation
- 6 x smart remote Winfrog computer stations located in Bridge, Client Office, Project Office, 2 x ROV, Dive Control

Port

Nassau

Flag

Bahamas

Call sign

C6WC7

Classification

DNV 1A1, DYNPOS AUTR (IMO II), Dk (+), HELIDK, ICE-C, CLEAN DESIGN, NAUT-AW (LoC), COMF V (3), DSV-SAT,EO

Year built/Builder

2007 by Aker Tulcea / Søviknes

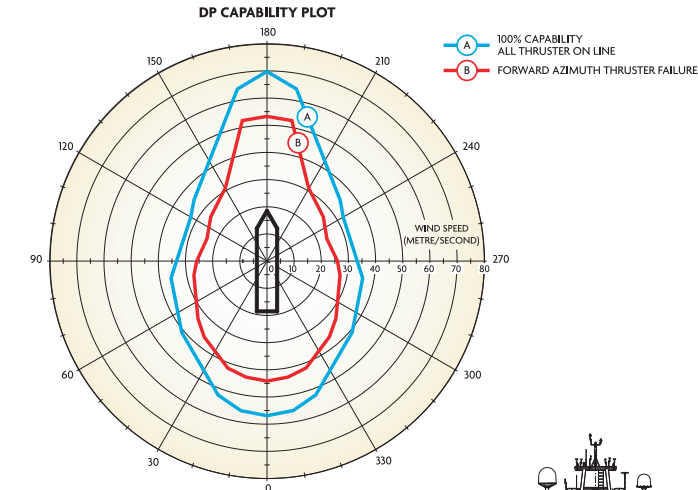
capacity of 3 Te at 15 m is located above the ROV hanger on the starboard side of the vessel.

Cargo Areas

The timbered main deck with an area of approximately 540 m² has a uniform loading capacity of 10 Te/m². The deck services include dedicated electrical power supply, seawater, compressed air, and oxy/acetylene facilities. The mezzanine deck, with an area of approximately 120 m² and capable of supporting loads of 5 Te/m², is primarily used for the diver work stations and winches.

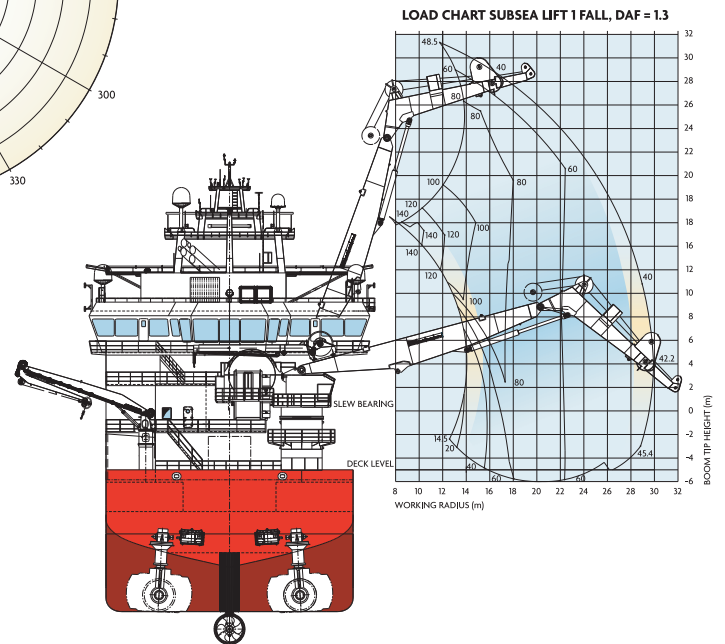
Remotely Operated Vehicles (ROVs)

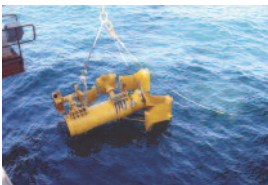
A Seatec Lynx observation class ROV is permanently installed in the hanger and deployed with a crane LARS to the port side of the vessel. The vehicle's primary function is to provide support to the divers, and is fitted with a manipulator in addition to the standard cameras and lighting system. The TMS vehicle is rated to 1,500 m and is capable of supporting a payload of 30 kg using various tooling packages. The vehicle control system has been integrated into the vessel accommodation. A Perry Slingsby 3000 m rated TXLS 150 HP WCROV c/w TMS is



permanently installed in the hanger and deployed with a dedicated "A" frame LARS to the starboard side of the vessel. The WCROV has a 7 function chilling T4 manipulator and a 5 function TA60 manipulator. The WCROV can support a variety of survey and tooling intervention packages.

On the main deck there is a "Plug & Play Facility" for a second WCROV's integration on the vessel. All power supplies, survey, communications are catered for at a dedicated take off point under the main crane starboard side.





HEADQUARTERS

Technip
89 avenue de la Grande Armée
75773 Paris Cedex 16
France
Phone: +33 (0)1 47 78 24 00

CONTACTS

Marine Assets
Carl HOLMEN
Phone: +33 (0)1 47 78 60 71
E-mail: cholmen@technip.com

Technip Marine Operation Services

Willy GAUTTIER
Phone: +44 (0) 1224 271000
E-mail: wgauttier@technip.com

Technip UK Limited
Enterprise Drive, Westhill,
Aberdeenshire, AB32 6TQ, UK
Phone: +44 (0) 1224 271000
Fax: +44 (0) 1224 271271

www.technip.com