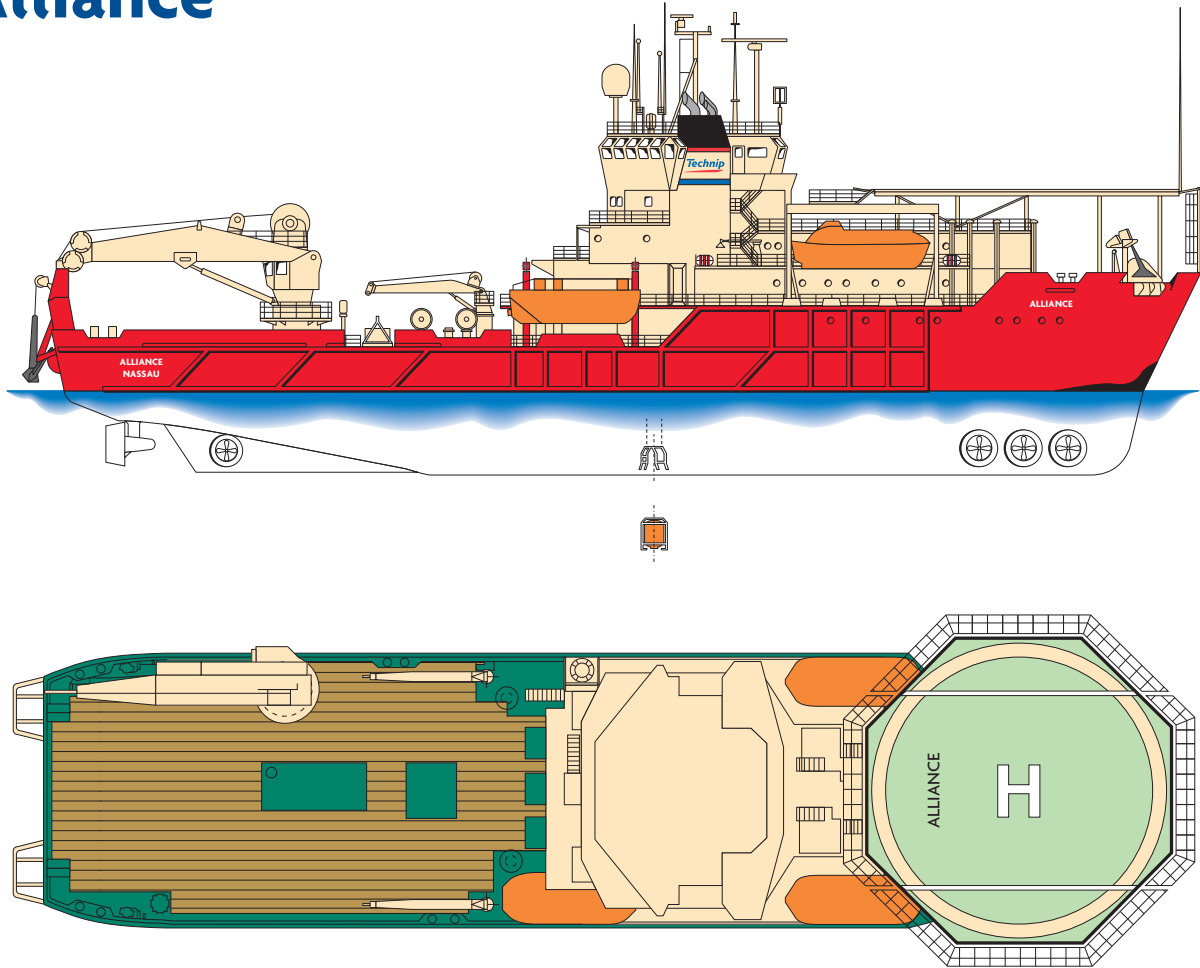


## Alliance



# Alliance



The Alliance is a purpose-designed and built diving support vessel for the demanding North Sea market capable of working throughout the year in virtually all sea and weather conditions.



## CAPABILITIES

Built in 1984, the vessel is certified for worldwide trading although the vessel has predominantly worked in the North Sea. The Alliance provides services, which include saturation dive support for offshore construction and inspection, repair and maintenance operations.

### Diving system

The saturation diving system is capable of supporting 16 divers in 3 living chambers allowing for split level diving or ongoing decompression. The system is rated to 350 msw, but presently certified to 300 msw.

The bell accommodates three divers and is launched and recovered through an aerated moonpool. The diving bell heave compensation system ensures that the diver can exit and enter the bell in the most severe weather conditions.

### Working deck

The open main deck is 33 m x 17.5 m with a uniform loading capacity of 5 te/m<sup>2</sup>. Up to 1,500 t of equipment can be carried on deck.

### Cranage

The Alliance's main crane has a 140/70 te SWL capacity at a radius of 7.75/15 m. It also has two telescopic service cranes of 3/1.5 te at 8/12 m radius.

### Dynamic positioning system

The vessel is fitted with a fully redundant Kongsberg Simrad SDP 521 dynamic positioning system. There are two fully retractable Simrad hydroacoustic transducers (one tracking), satellite positioning (DGPS), fan beam and two vertical taut wire reference systems.

### Machinery/propulsion

The vessel is powered by 4 diesel engines, each driving a generator, which provides a total output of

## SPECIFICATIONS

### Principal dimensions

Length overall	78.3 m
Length between pp	69.0 m
Breadth moulded	18.0 m
Depth moulded	8.6 m

**Operating draft** 5.0 m - 5.5 m  
(depending on loading conditions)

**Displacement**  
5,020 te at 5.5 m draft

**Gross tonnage** 3,700 t

### Craneage

#### Main lifting facility

- Main crane port side aft
- 140/70 te at 7.75/15 m radius
- Whip line 8 te at 24 m radius

#### Additional lifting facilities

Pedestal cranes stb and port  
3 te at 8 m radius, 1.5 te at 12 m

**Deck space** 550 m<sup>2</sup>  
Working moonpool 3.6 m x 3.6 m

**Deck load** 5 te/m<sup>2</sup>  
Max overall 1,500 te

### Capacities

■ Fuel oil	780 m <sup>3</sup>
■ Fresh water	358 m <sup>3</sup>
■ Ballast water	1,540 m <sup>3</sup>

### Service air

Total 24.8 m<sup>3</sup>/min FAD, 7 bar pressure

### DP system

Kongsberg Simrad SDP 521

### Reference Systems

- 1 x Simrad hydroacoustic (410)
- 2 x Lightweight taut wires
- 2 x DGPS
- 1 x fan beam
- 1 x Hipap hydroacoustic

**ERN** 99/99/99

### Mooring system

- 2 x 40 te hydraulic winches with 2,100 m 40 mm dia. wire
- 2 x 2.8 te anchors

### Power plant

- 4 x Bergen diesel engines
- Total power production 9,480 kW

### Propulsion Forward

- 3 x Tunnel thrusters 736 kW, 11 te thrust (each)

### Aft

- 2 x Azimuth thrusters 1,796 kW, 31 te thrust (each)
- 1 x Tunnel thruster 736 kW, 11 te thrust

**Bollard pull** 60 te

### Endurance

- FW making capacity 20 te/24 hr
- Fuel consumption (typical)
  - In port 4 m<sup>3</sup>/24hrs
  - Transit 21 m<sup>3</sup>/24hrs
  - DP approx 14 m<sup>3</sup>/24hrs

**Maximum speed**  
11.5 knots

### Helideck

- Bell 212, Super Puma
- EC 225 type helicopter

**Accommodation**  
80 people in 59 cabins

### Lifesaving appliances

- Lifeboats (TEMPSC type) 2 x 70 person
- Hyperbaric Lifeboat (SPHL type) 1 x 16 divers, + 3 crew

■ Life rafts 8 x 20 person

### Diving system

- Depth rating 350 msw (presently certified to 300 msw)
- No. in sat. 16
- No. of bells 1
- Bell volume 6 m<sup>3</sup>
- System volume 92 m<sup>3</sup>
- Gas storage 12,750 m<sup>3</sup> (STP) at 200 bar
- Reclaim fitted to chambers and bell SPHL Type: enclosed self-launched, self-driven
- Capacity 16 divers, 3 crew

### ROV

Observer class ROV 1

**Flag** Bahamas

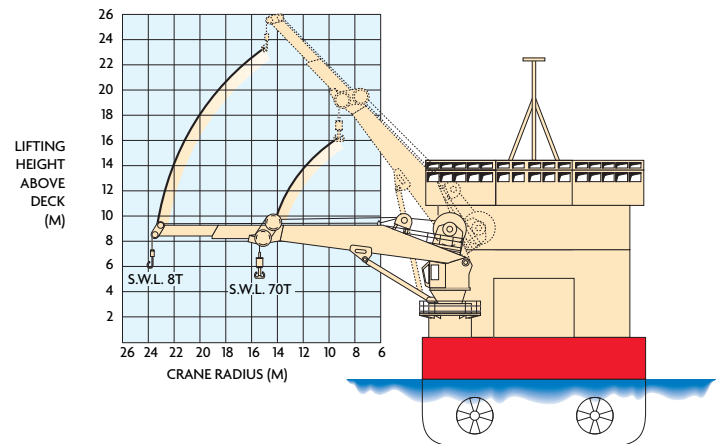
**Call sign** C6 LC9

### Classification

DNV+1A1, HELIDECK, DSV ISF, DSV IIISF, DYNPOS (AUTR), EO, SBM, ISM

### Year built/builder

1984 by Trosvik Mek, Verksted



13,000 HP (9,480 kW). The engine room is divided by a fire bulkhead with 2 diesel engines in each compartment.

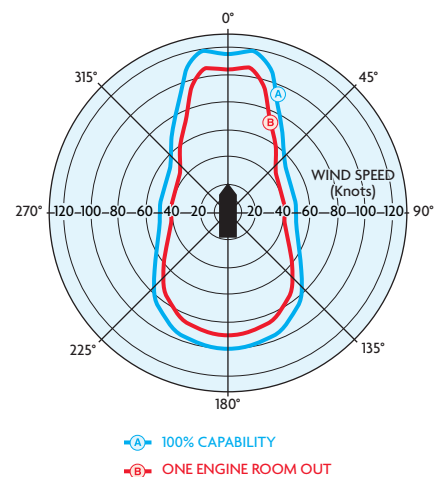
The stern propulsion consists of two Azimuth thrusters of 2,500 HP and one 1,000 HP variable pitch single tunnel thruster. The forward thruster capacity consists of three 1,000 HP

variable pitch twin tunnel thrusters providing a total transverse thrust of 75 te with constant heading.

### Accommodation

The accommodation for 80 crew members is designed and equipped to modern European standards and is fully air-conditioned.

### DP Capability Plot



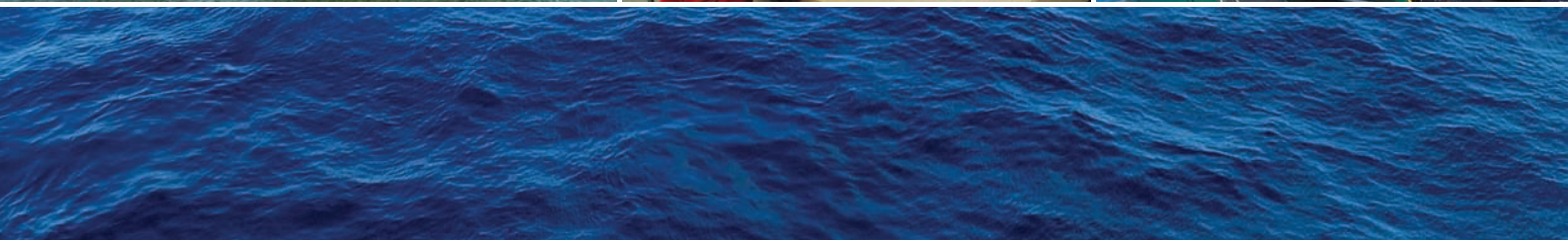
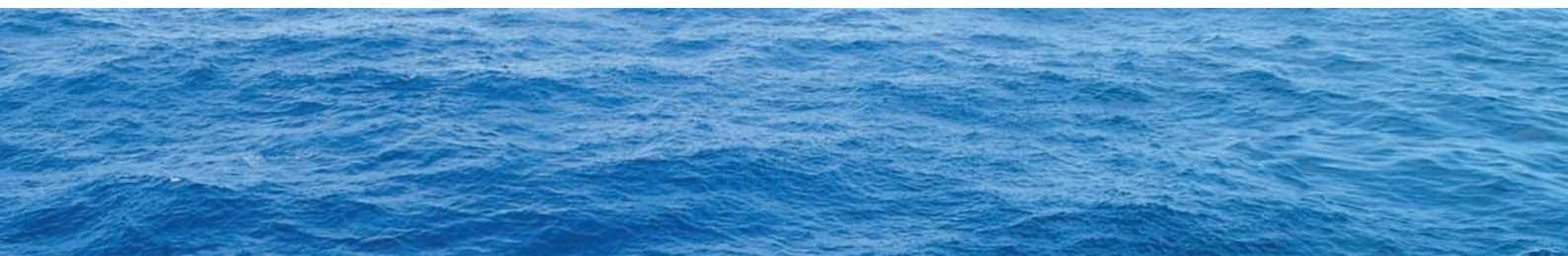
Technip is a world leader in the fields of project management, engineering and construction for the oil & gas industry, offering a comprehensive portfolio of innovative solutions and technologies.

With 23,000 employees around the world, integrated capabilities and proven expertise in underwater infrastructures (Subsea), offshore facilities (Offshore) and large processing units and plants on land (Onshore), Technip is a key contributor to the development of sustainable solutions for the energy challenges of the 21<sup>st</sup> century.

Present in 46 countries, Technip has operating centers and industrial assets (manufacturing plants, spoolbases, construction yard) on five continents, and operates its own fleet of specialized vessels for pipeline installation and subsea construction.

The Technip share is listed on Euronext Paris exchange and over the counter (OTC) in the USA.

[www.technip.com](http://www.technip.com)



#### HEADQUARTERS

##### **Technip**

Tour Technip  
6-8 allée de l'Arche  
92973 Paris La Défense Cedex  
France

Phone: +33 (0)1 47 78 21 21

Fax: +33 (0)1 47 78 33 40

[www.technip.com](http://www.technip.com)

#### CONTACTS

##### **Marine Assets**

Carl HOLMEN

Phone: +33 (0)1 47 78 60 71

E-Mail: [cholmen@technip.com](mailto:cholmen@technip.com)

##### **Offshore Operation Services**

Technip UK Limited

Enterprise Drive, Westhill,  
Aberdeenshire, AB32 6TQ, UK

Phone: +44 (0) 1224 271000

Fax: +44 (0) 1224 271271