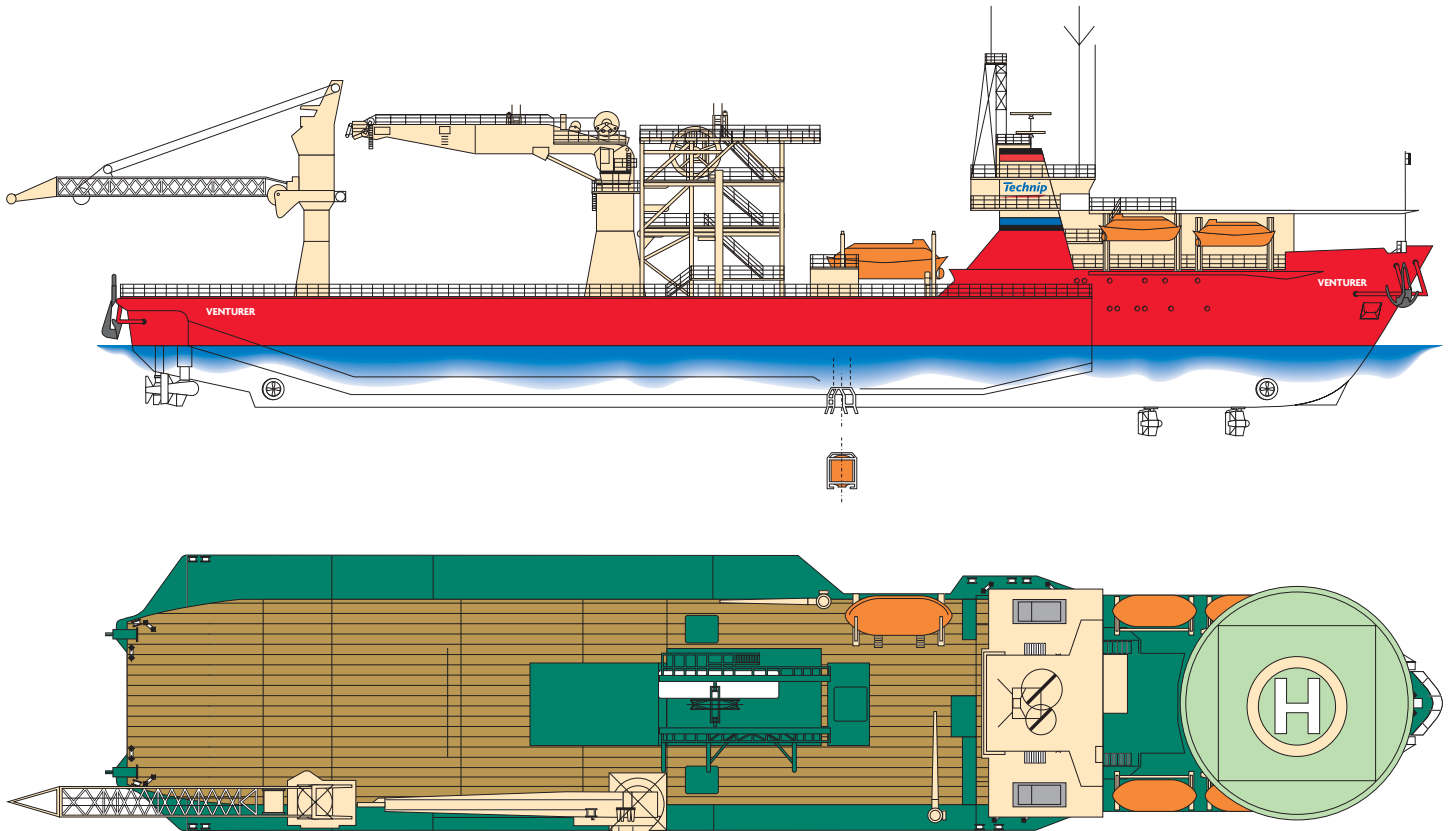


Venturer



Venturer



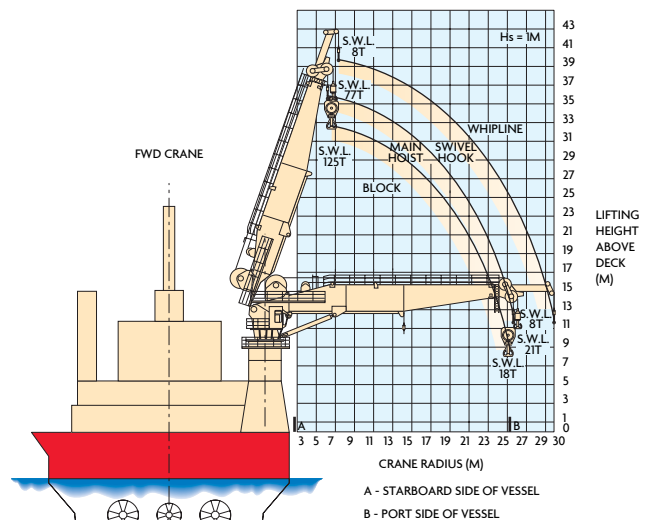
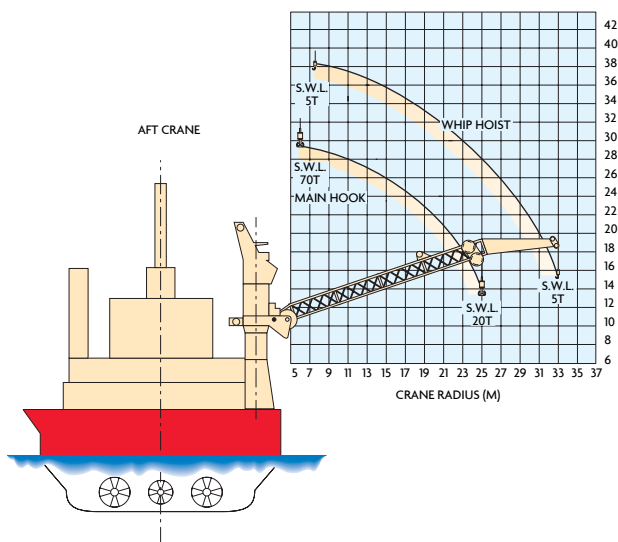
The Venturer ranks among the largest monohull, dynamically positioned, construction class diving support vessels in the world and was the first purposely converted vessel for FPSO installation.

CAPABILITIES

The vessel has unique characteristics in terms of size and versatility that enable it to perform a wide range of construction tasks.

It has more than 1,700 m² of open deck space and can carry 2,500 te of anchor chain in below deck storage. This enables a full range of FPSO installation equipment to be carried simultaneously such as flexible pipeline/umbilical reels, permanent mooring anchors, wire rope reels, buoys, ROVs etc.

The Venturer is capable of installing and pre-tensioning anchor systems up to a maximum of 1,000 tonnes load. The Venturer's craning capacity and configuration, coupled with her free deck space enables the vessel to install long and multidimensional spool pieces with unequalled efficiency. The height of the cranes permits platform access and also installation of rigid steel risers using the 'stalk on' method, whilst maintaining station on DP.



A - STARBOARD SIDE OF VESSEL
B - PORT SIDE OF VESSEL

SPECIFICATIONS

Principal dimension

Length overall	129.10 m
Length between pp	115.68 m
Breadth overall	24.60 m
Depth moulded	10.70 m

Operating draft

4.50 m - 6 m, plus thrusters project 3 m below hull (depending on loading conditions)

Displacement

11,782 te at 6.0 m draft

Gross tonnage

8,300 t

Cranage

Main lifting facility - starboard side

- 1 x Pedestal crane aft
70/20 te at 10/25 m radius
Max wire length 400 m
Whip line 10 te at 33 m radius
Max wire length 400 m
- 1 x Pedestal crane forward
155/34 te at 6.5/26 m radius
Max wire length 430 m
Whip line 8 te at 36 m radius
Max wire length 430 m

Additional lifting facilities

Starboard 5 te at 10 m radius

Deck space

1,700 m²
Working moon pool 11.3 m x 2.7 m

Deck load

10 te/m²
Max overall 3,000 te

Capacities

- Fuel oil 850 m³
- Fresh water 659 m³
- Chain lockers 2,530 te

Deck services

- 2 x 15,900 l/min air compressors at 8 bar
- 1 x 120 l/min sea water pump

DP system

- Kongsberg SDP 22

Reference systems

- Simrad hydroacoustic HPR 400/HiPAP 350
- Artemis microwave
- 2 x Taut wires
- 2 x DGPS
- 1 x Laser fan beam

ERN

99/99/93

Power plant

5 X MAK diesel engines 1,290 kW
Total power production 6,450 kW

Propulsion

Forward

- 2 x Azimuth thrusters 1,100 kW each
- 1 x Tunnel thruster 590 kW

Aft

- 2 x Azimuth thrusters 1,620 kW each
- 1 x Azimuth thruster 1,550 kW
- 1 x Tunnel thruster 590 kW

Bollard pull

80 te

Endurance

- Max period
- Between portcalls 36 days
 - FW making capacity 60 te/24 hrs
 - Fuel consumption (typical)
 - In port 5 m³/day
 - In transit 23 m³/day
 - DP 10 m³/day

Service speed

8.5 knots

Helideck

561 N

Accommodation

98 people in 50 cabins

Lifesaving appliances

- Lifeboats 2 x 48 person
2 x 50 person
- Life rafts 4 x 25 person

Diving system

- Depth rating 300 msw
- No. in sat 16
- No. of bells 1
- Bell volume 4.5 m³
- System volume 102 m³
- Gas storage 7,800 m³ at 200 bar

Diver reclaim fitted

- SPHL Type: enclosed, self-launched, self-driven
- Capacity 16 divers, 3 crew

Flag

Bahamas

Call sign

C6MW3

Classification

DNV+IA1, DSVIISF, DYNPOS (AUTR), EO, HELDK, SF

Year built/builder

- 1981 by Weft Nobiskrug GMBH
- 1995 converted by Pan United

The vessel's extensive deck storage, together with its large crane capacity and economical operation in all modes make the Venturer an exceptional solution to subsea development and FPSO project requirements, including:

- Floating production system installations
- Flexible flowline laying, recovery and repairs
- Umbilical laying, recovery and repairs
- Spool piece installation and tie-ins
- Subsea pipeline repairs
- Pigging and testing
- Hookup services and support
- Platform and riser repairs
- SBM installations, repairs and removal

Diving system

The saturation diving system is capable of supporting a total of 16 divers in 4 living chambers allowing for split-level diving. The system is rated to 300 msw.

The 3-man bell is launched and recovered through a centerline moonpool. A containerised air diving system and associated winches and A-frame can readily be fitted on deck to existing

connections. The vessel has a davit launched, selfpropelled hyperbaric lifeboat for 16 divers and 3 crew.

Cranage

The Venturer is fitted with two pedestal mounted cranes on the starboard side of the main deck. The forward crane is a Hydralift with 155/34 te capacity at 6.5/26 m radius and the aft crane is a Liebherr with 70/20 te capacity at 10/25 m radius. Both cranes can operate subsea to 300 m. There is also one service crane with a 5 te capacity on the starboard side.

Working areas

The main deck has an exceptionally large flat working area of 1,700 m² with a loading capacity of 10 te/m². The maximum overall load is 3,000 t. There is a 11.3 m x 2.7 m working moonpool.

Dynamic positioning system

The Venturer is fitted with a fully redundant Kongsberg SDP 22 dynamic positioning system. The system accepts position references from two taut wires, an HPR 400/ HiPAP 350

hydroacoustic system, Artemis, two DGPS reference systems and laser fan beam.

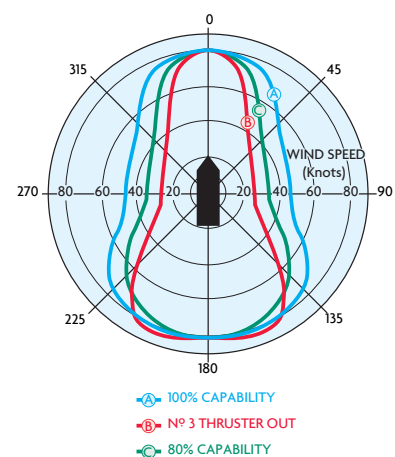
Machinery/propulsion

The vessel is powered by 5 diesel engines, each driving a generator located in two separate engine rooms and providing a total of 6,450 kW. The propulsion system consists of three azimuth and one tunnel thruster aft and two azimuth and one tunnel thruster forward.

Accommodation

Accommodation is provided for 98 people in modern, fully air-conditioned cabins. There are also office facilities, a conference room and recreation rooms.

DP Capability Plot



HEADQUARTERS

Technip

Tour Technip
6-8 allée de l'Arche
92973 Paris La Défense Cedex
France
Phone: +33 (0)1 47 78 21 21
Fax: +33 (0)1 47 78 33 40
www.technip.com

CONTACTS

Marine Assets

Carl HOLMEN
Phone: +33 (0)1 47 78 60 71
E-Mail: cholmen@technip.com

Offshore Operation Services

Technip UK Limited
Enterprise Drive, Westhill,
Aberdeenshire, AB32 6TQ, UK
Phone: +44 (0) 1224 271000
Fax: +44 (0) 1224 271271

This document is the property of Technip and is not intended to be a binding contractual document. Any information contained herein shall not result in any binding obligation on the part of Technip, or any of its affiliates, and is provided for information purposes only.



With a workforce of 23,000 people, Technip ranks among the top five corporations in the field of oil, gas and petrochemical engineering, construction and services. The Group is headquartered in Paris. The Group's main operating centers are located in France, Italy, Germany, the UK, Norway, Finland, the Netherlands, the USA, Brazil, Abu-Dhabi, China, India, Malaysia and Australia. In support of its activities, the Group manufactures flexible pipes and umbilicals, and builds offshore platforms in its manufacturing plants and fabrication yards in France, Brazil, the UK, the USA, Finland and Angola, and has a fleet of specialized vessels for pipeline installation and subsea construction. The Technip share is listed on Euronext Paris.