

Our Fleet



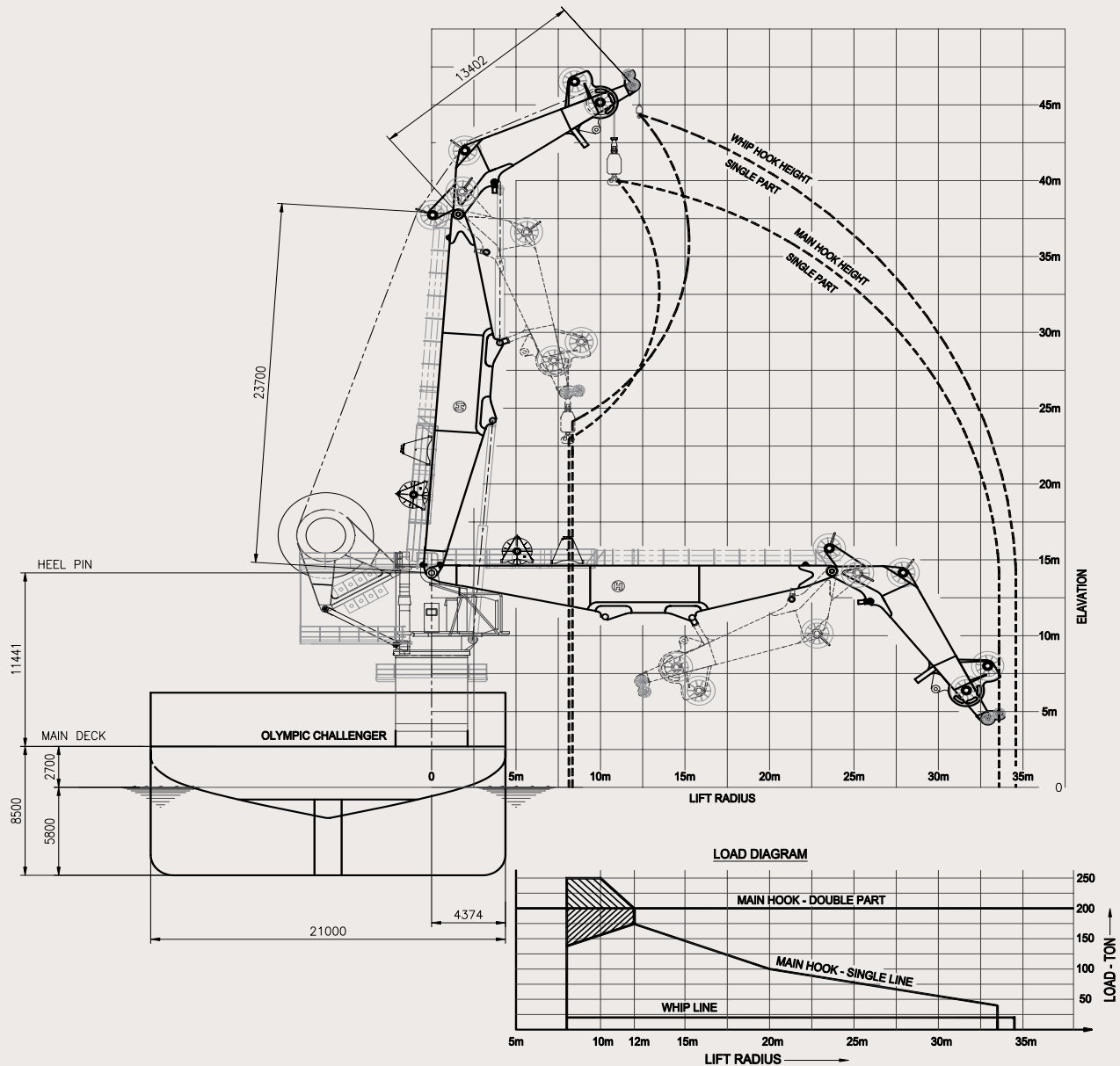
Olympic Challenger

[DP2 multi-service vessel



Technip
take it further.

Olympic Challenger



DP2 Multi Service Vessel

Subsea Umbilicals, Risers and Flowlines (SURF), Inspection, Repair and Maintenance (IRM), Two UHD 200 HP ROV Systems and Saturation Diving Support

ROV system

- Manufacturer Schilling
- Type Ultra Heavy Duty - Work Class
- Quantity 2
- Build Number 30 & 31
- Horse Power 200 hp
- Depth Rating 13,124 fsw (4000 msw)
- Payload capacity in seawater 550 lb (250 kg)
- TMS Type Top Hat
- Launch & Recovery System ODIM
 - Active Heave Compensated
 - UHD 30 - ROV moonpool cursor
 - UHD 31 - Starboard side extension "A" frame
- ROV Moonpool 16 ft (4.8 m) x 16 ft (4.8 m)
- Manipulators 7 Function
 - SC Manipulator – Schilling T4
 - 5 Function Grabber - Rigmaster
- Sensors True X Y & Z dynamic positioning (station keeping) Fiber Optic Gyro
Kongsberg MS-1000 sonar
Doppler velocity log
- Hanger Equipment Auxiliary Hydraulic Unit

Specifications

Type639 - Multi Purpose Offshore Vessel
 ClassificationDNV ✕1A1 ICE-C SF COMF-V(3) HELDK E
 DYNPOS-AUTR CLEAN DESIGN DK (+)
 Year Built 2008
 Manufacturer..... Aker Yards AS Aukra
 IMO #9398292
 Homeport of Registration Fosnavag, Norway
 Length347 ft (105.9 m)
 Breadth Moulded 69 ft (21.0 m)
 Operating Draft 18.7 ft (5.7 m)/20.0 ft (6.1 m) Max 21.7 ft (6.6m)
 Loaded Displacement 9755 t (8850 Te)
 Deadweight4300 t (3900 Te)
 Transit Speed..... 12 knots (econ)/15 knots (max)
 E.R.N. 99.99.99

Dynamic positioning

- DP Class.....2
- DP System Kongsberg K-POS
- References 2 DGPS, 2 Seapath, 2 HIPAP, 1 Fanbeam

Power & propulsion

- Main Generators (6)2100 eKW, 690 V, 60 Hz, 1800 rpm
- Emergency Generator (1) 370 eKW, 690 V, 60 Hz, 1800 rpm
- Harbor/Standby Generator (1)..... 370 eKW, 690 V, 60 Hz,
1800 rpm
- Stern Propulsion 2 x 3000 kW Azimuth Thrusters
- Bow Propulsion 1 x 1500 kW Retractable Azimuth Thruster
2 x 1500 kW Tunnel Thrusters

Capacities

- Fuel Oil 1350 m³
- Ballast..... 3700 m³
- Fresh Water 760 m³ (+ 300 m³ stab tk 2)
- FW Generator Capacity25-30 m³/day
- Fuel Consumption (typical)..... 4-5 m³/day (in port)
8-9 m³/day (DP)
18 m³/day (transit)
30 m³/day (max speed)

Facilities/Accommodations

- Single Cabins22 pers.
- Double Cabins78 pers.
- Total POB 100 pers.
- Hospital.....1
- Client/Project Facilities.....(1) Project Office
(1) Client Suite
(1) Client Office
(1) Conference Rm
- ROV/SurveyEnclosed ROV Hanger
(1) Online Rm
(1) Offline Rm
(1) ROV Electrical Workshop
(1) ROV Mechanical Workshop

Communication

- VSAT.....Dual C-Band System
6 direct dial-in US numbers
1 direct dial-in Norwegian number
- InternetHigh speed with adjustable bandwidth
to meet client needs
Capability for live streaming video

Cranes

- Manufacturer.....Hydramarine
- Type Knuckle Jib Crane HMC 4240
- Main Line..... 250 Te at 10 m radius (Double line)
200 Te at 12 m radius (single line)
100 Te at 20 m radius
40 Te at 33.5 m radius
- Active Heave Compensation.....Semi-active - 200 Te (max)
- Main Line Wire length 2800 m (usable)
- Whip Line..... 20 Te at 8 m to 34.5m radius
- Whip Line Wire Length3000 m
- Manride Function.....10 Te (max)
Notes: De-rated capacities apply based upon sea state &
ship-to-ship.

- Auxiliary Crane (x2).....ABAS
3 Te/1.7-15 m radius (one port & one stbd)
Notes: Port side crane man-rated

- Hanger Crane.....Effer 275 M

Helideck

- Helicopter max ratingS-92
- Helicopter RefuellingN/A
- Helideck Dimensions.....69 ft (21 m) x 69 ft (21 m)

Main deck

- Max deck load 2205 t (2000Te) (COG =1m above dk.)
- Free deck area..... 10764 ft² (1000 m²)
- Deck Surface..... Steel
- Working Moonpool 24 ft (7.2 m) x 24 ft (7.2 m)
- Deck Strength 10t/m² aft of FR 57
5t/m² fwd of FR 57
- Electrical Service480v, 60 Hz, 3-phase, 120 amps
120v, 60 Hz, 50 amps
- FacilitiesDeck Workshop & Rigging Locker
Below deck cargo hold
- Ship Service Air Limited
Notes: Removable bulwark sections on starboard side aft of
crane.





- Subsea installations
- Subsea risers
- Inspections, repair & maintenance
- Designed with focus on good sea keeping capabilities
- Excellent station keeping characteristics
- Low fuel consumption & low emissions
- Comfort class accommodations for 100 personnel
- Subsea umbilicals
- Subsea flowlines
- Operations & maintenance

HEADQUARTERS

Technip

89 avenue de la Grande Armée

75773 Paris Cedex 16

France

Phone: +33 (0) 1 47 78 24 00

Technip USA, Inc.

11700 Katy Freeway - Suite 150

Houston, Texas 77079 - USA

Phone: 281-870-1111

www.technip.com