

Our Fleet



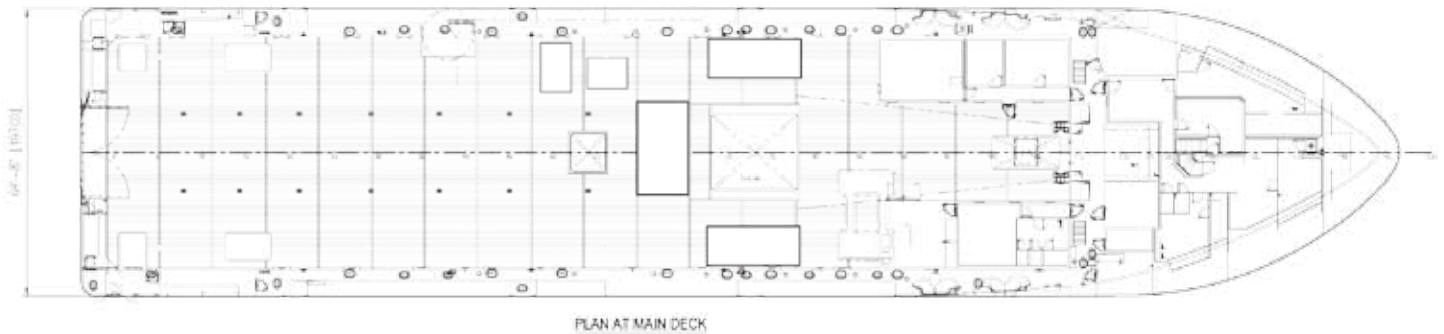
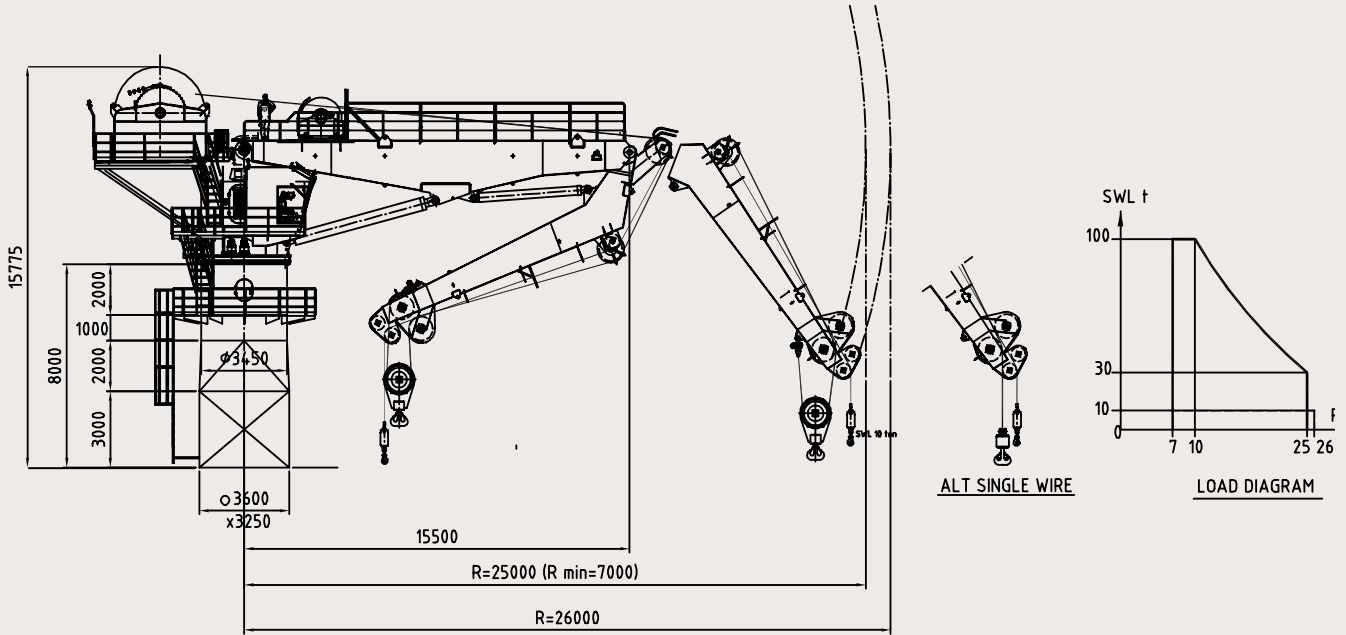
Normand Commander

DP2 multi-service vessel



Technip
take it further.

Normand Commander



DP2 - Multi Service Vessel (MSV), Diving, Inspection, Construction, ROV Support

The vessel has a length of 302' ft (92.9m), beam of 65' ft (19.7m), 100T crane with accommodations for 72 people and Sikorsky S-92 class helideck.

The ship is equipped with a fully integrated diesel electric propulsion system and prepared for worldwide operation. The clear deck area of 840m², has a 6m² moonpool and is equipped with a DNV classed 1000 fsw Saturation System and ROV support. Below deck it is arranged for a whole range of various liquid cargo categories.

Specifications

Length (overall).....	302 ft (92.95 m)
Length between perpendicular.....	284 ft (86.60 m)
Breadth Moulded.....	64.6 ft (19.7 m)
Depth Main Deck.....	25.3 ft (7.7 m)
Draft Midship (max).....	20.7 ft (6.3 m)
Type.....	MT 6016 Mk II
Design.....	Marin Teknikk
Classification.....	DNV ✱1A1 ICE-C SF COMF-V3) HELDK-S DSV-SAT E0 DYNPOS-AUTR CLEAN DK(+) HL(2,5)
Year Built.....	2006
Registry (Flag).....	Norway
Operating Draft (min/max).....	14.12 ft (4.3 m)/20.7 ft (6.3 m)
Tonnage (gross/net).....	4560/1368
Max Deck Load.....	Project Specific
Free Deck Area (length x width).....	174 ft (53 m) x 52 ft (15.85 m)
Moon Pool.....	19.7 ft (6 m) x 17.3 ft (5.2 m)
Accommodations.....	72 people
Hospital Beds.....	4
Transit Speed (econ/max).....	14/16 kts
Helicopter Max rating.....	Sikorsky S-92
Helicopter Refueling Capacity.....	N/A
Helideck Dimensions.....	69 ft (21 m) x 69 ft (21 m)

Machinery

- Main Engines (4)..... CAT, 3516TA, 1901 bkW
- Main Generators (4)..... Siemens, 690 V, 2028 kVA
- Emergency Generator..... CAT, 3408TA, 370 ekW
- Water Makers..... 9,275 gal (35m³)/day

Bunker capacity

- Fuel..... 583,000 gal (2,200m³)
- Fresh Water..... 164,300 gal (620m³)

Dynamic positioning

- DP Class..... 2
- DP System..... Kongsberg Maritime AS, SDP21
- References..... 2 DGPS, 1 Tautwire, 1 HIPAP, 1 Fanbeam
- Main Prop. Thrusters (2)..... Rolls Royce, AZP 100, 2200 kW
- Main Prop Thruster Drives (2)..... Siemens, 2200 kW
- Retractable Thruster..... Rolls Royce, UL 1201, 883 kW
- Tunnel Thrusters (2)..... Rolls Royce, TT 2200 DPN, 883 kW

Communication systems

- V-SAT, Inmarsat Mini M, SSB Furuno, Phone, Email, VHF, UHF

Navigation

- Electronic Chart System, Echo Sounder, ECDIS, Voyage Data Recorder

Main crane

Derrick

- Make/Model..... National Oilwell
- Type..... AHC Knuckle Boom
- Boom Length
 - Main..... 33 ft (10 m)
 - Knuckle..... 75 ft (23 m)
- Capacity.....
 - Main Block..... 3,280 ft. x 110 s. Tons (1,000 m x 100 tonnes)
 - Auxiliary Block..... 6,561 ft x 55 s. Tons (2,000 m x 50 tonnes)

Auxiliary crane

- Make/Model/Type..... (2) Hydrmarine
- Boom Length..... 49 ft (15 m)
- Capacity..... 5 Tonnes

Diving system

- 1,000 fsw DNV Classed 9 man Saturation system complete with SPHL (Self Propelled Hyperbaric Lifeboat). Surface diving support capability.

ROV system

- 120 hp Work class Rated to 10,000 fsw (3,048 m)



HEADQUARTERS

Technip

89 avenue de la Grande Armée

75773 Paris Cedex 16

France

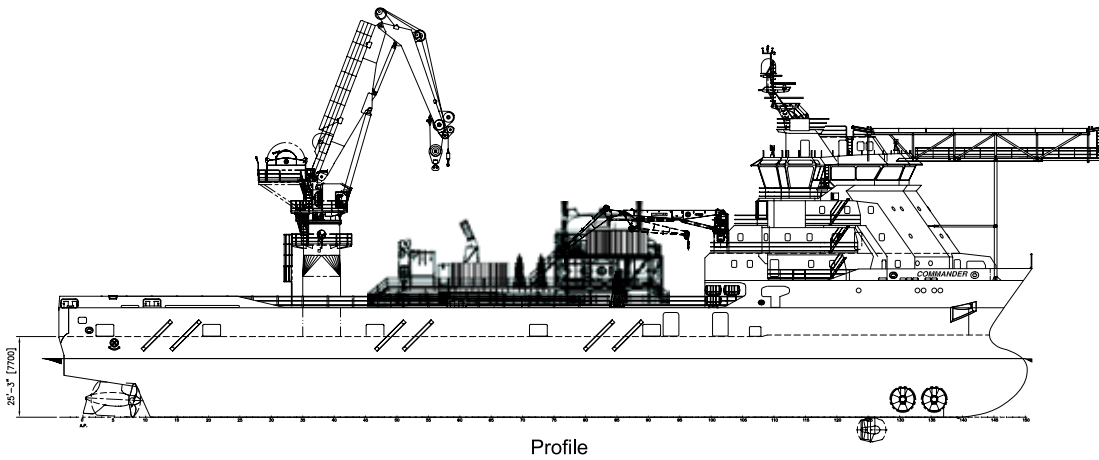
Phone: +33 (0) 1 47 78 24 00

Technip USA, Inc.

11700 Katy Freeway - Suite 150

Houston, Texas 77079 - USA

Phone: 281-870-1111



www.technip.com

The Normand Commander is designed for diving support as well as performance of field development, SURF and IRM works including but not limited to:

- Subsea Field Development
- Subsea Construction
- Subsea Inspection, Repair & Maintenance
- Deepwater Lowering
- Flying Lead Installation
- Installation of PLET's & Manifolds
- Installation of Subsea Trees
- Install Rigid & Flexible Jumpers
- Installation of Rigid & Flexible Flowlines
- Installation of Umbilicals, Umbilical Termination Assemblies, etc
- Pipeline & Umbilical Installation Support
- Subsea Well Intervention
- Subsea Plug & Abandonments
- Diving to 1,000 fsw (305 m)
- ROV to 10,000 fsw (3,050 m)
- Crane Wire Capacity 6,560 ft x 2"o (2,000 x 50 mm o)
- Installation of Suction Piles & Other Anchoring/Mooring Systems
- Diving & ROV Surveys
- Subsea Salvage Programs
- Platform and Pipeline Inspections
- Installation of Subsea Acoustics/Survey Equipment
- Mattress Installation
- Site Clearance Surveys
- Platform Repairs
- Installation of Hot Taps, Anodes, Clamps, Risers, etc...
- Pipeline Tie-Ins