

DLB Iroquois

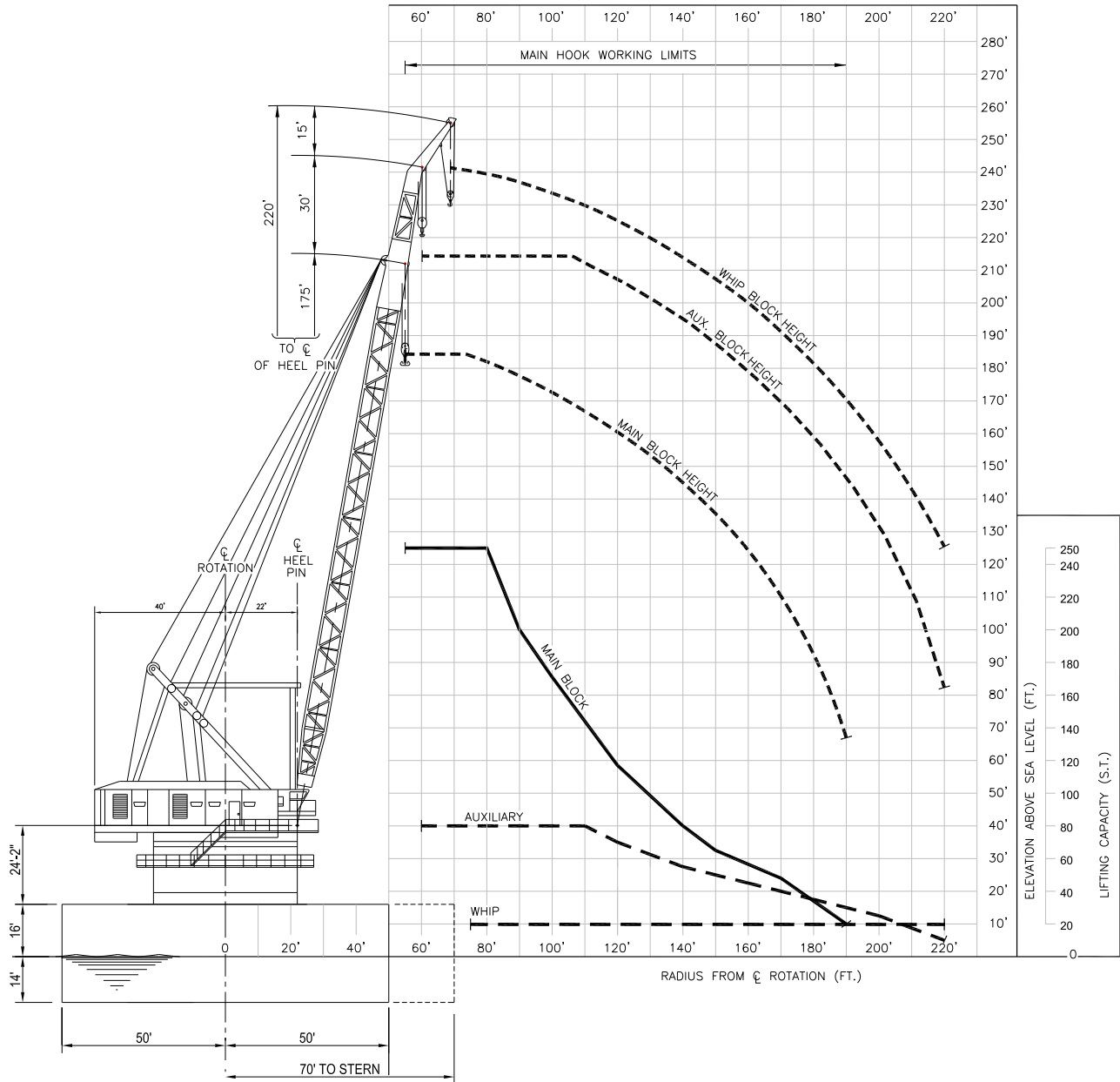


Global Industries



There's a new energy at Global.

globalind.com



HOOK RADIUS vs. LIFTING CAPACITY & HOOK HEIGHT

Pipelay Derrick Barge



GENERAL

Length (overall)	400 ft (121.92 m)
Width	100 ft (30.48 m)
Depth	30 ft (9.14 m)
Classification	ABS A-1
Year Built	1973
Registry (Flag)	Vanuatu
Operating Draft (min/max)	14 ft (4.27 m) / 18 ft (5.49 m)
Tonnage (gross / net)	10696 / 3208
Max Deck Load	Project Specific
Free Deck Area (length x width)	127.5 ft (38.86 m) x 45 ft (13.72 m)
Moon Pool (yes / no)	no
Accommodations	256 people
Hospital Beds	3
Transit Speed (econ / max)	Towed
Helicopter Max Rating	9,700 lbs (4,399.92 kg)
Helicopter Refueling Capacity	N/A
Helideck Dimensions	60 ft (18.29 m) x 60 ft (18.29 m) octagonal

MACHINERY

Main Engines	N/A
No. of Generators	5
Main Power	(3) 2,500 kW
Auxiliary Power	(1) 800 kW, (1) 175 kW emergency
No. of Compressors	8
Total Output	2,250 cfm (3,822.75 m ³ /h)
Water Makers	(3) Sea Recovery
Total Capacity	1,200 USG/h (4,542 L/h)

BUNKER CAPACITY

Fuel	534,428 USG (2,022,810 L)
Fresh Water	79,000 USG (299,015 L)
Potable Water	60,000 USG (227,100 L)

DYNAMIC POSITIONING

.....N/A

COMMUNICATION SYSTEMS

VHF Marine Radio - Standard Horizon; SSB - Transceiver - Furuno;
Helicopter Radio - iCom; Mini M-SAT - Nera;
Orbit Marine - (Telephone Network); Gyro - Simrad;
Cybernet, (4) Bank MTN Computer Stations

NAVIGATION

Nauticaust - Maritime Information; Vanatge Pro - Weather Station;
(2) Marine Radars (1) Furuno & (1) Samsung;(2) GPS Navigators -
Furuno; AD Converter; (3) VHF Marine Radios - Standard Horizon

MOORING EQUIPMENT

No. of Anchors; Wt	(9); 12,000 kg	(1); 15,000 kg
Make, type	Delta Flipper Anchors	Delta Flipper Anchor
No. of Winches	10	
Make, type	Intercon	
Wire (length/diameter)	5,000 ft (1,524 m) / 2.5 in	

MAIN CRANE

Derrick		
Make, Model	American Hoist / R40	
Type	Revolving	
Boom Length		
Main	175 ft (53.34 m)	
Auxiliary	205 ft (62.48 m)	
Whip	220 ft (67.06 m)	
Capacity		
Main Revolving	250 s. tons @ 80 ft (226 MT @ 24.38 m)	
Main Fixed	250 s. tons @ 80 ft (226 MT @ 24.38 m)	
Auxiliary	80 s. tons @ 110 ft (68.04 MT @ 33.53 m)	
Whip	20 s. tons @ 220 ft (13.6 MT @ 67.06 m)	

AUXILIARY CRANE(s)

Make, Model	Manitowoc 4100 W
Type	Crawler
Boom Length	110 ft (33.53 m)
Capacity	134 s. tons (121 MT)

MISSION EQUIPMENT

Pipelay Method(s)	Conventional S-Lay
No. of Work Stations (@ 40 ft)	8
Pipe Diameter (min/max)	4 in / 48 in
Tensioners (make, type)	SAS SVE 100 LCS 30 AC
Total Capacity (ea/ttl)	220 kips (99,762 kg) / 440 kips (199,584 kg)
Reel Capacity (tonnage)	N/A
Abandon/Rec. Winch	
Type (make/model)	SAS ARW 200 E
AR Wire (length/diameter)	5,000 ft (1,524 m) / 3 in - 3.5 in
Capacity	200 MT
Davits	(6) 75 s. tons ea, (68 MT ea)

STINGER

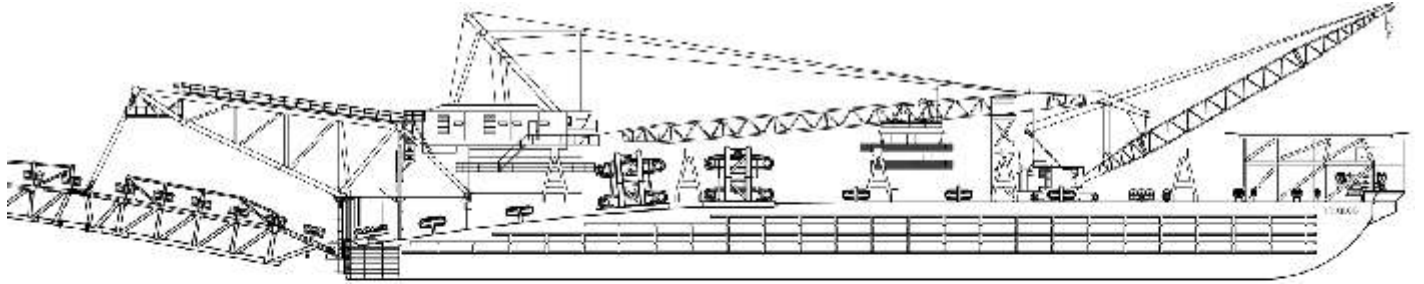
4 Section Articulated	240 ft (73.15 m)
Rigid Truss	180 ft (54.86 m)

PIPE BURY EQUIPMENT

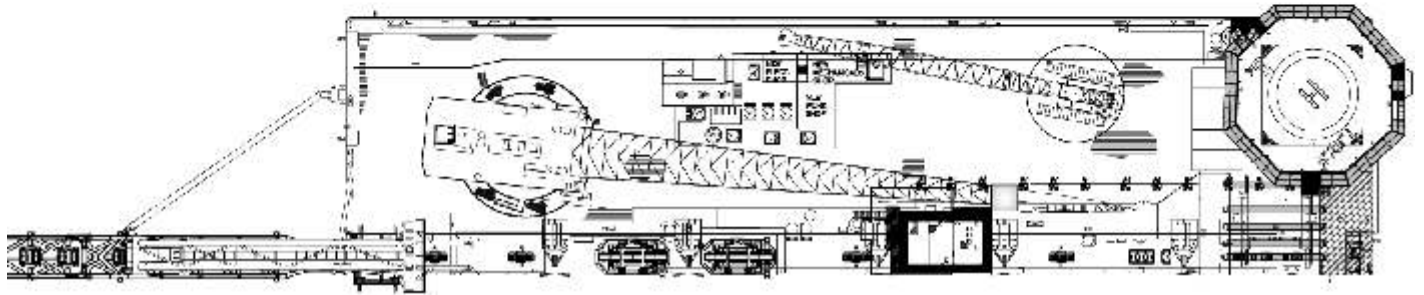
Pipe Diameter (min/max)	N/A
Jetting Pumps	
Type	Peerless, 3 stage
Capacity	250 psi @ 1,750 rpm
Compressor Eductor (make/model)	N/A
Capacity	N/A
Water Eductor (make/model)	N/A
Capacity	N/A
Pump (make/model)	N/A
Capacity	N/A
Sled Winch (make/model)	N/A
Capacity	N/A
Hose Reels	
Type	N/A
Capacity	N/A

DIVING SYSTEM

.....N/A



Profile



Plan



globalind.com

Operations

8000 Global Drive
Carlyss, LA 70665 USA
Tel +1.337.583.5000
Fax +1.337.583.5100

Business Development

11490 Westheimer, Suite 400
Houston, TX 77077 USA
Tel +1.281.529.7979
Fax +1.281.529.7980