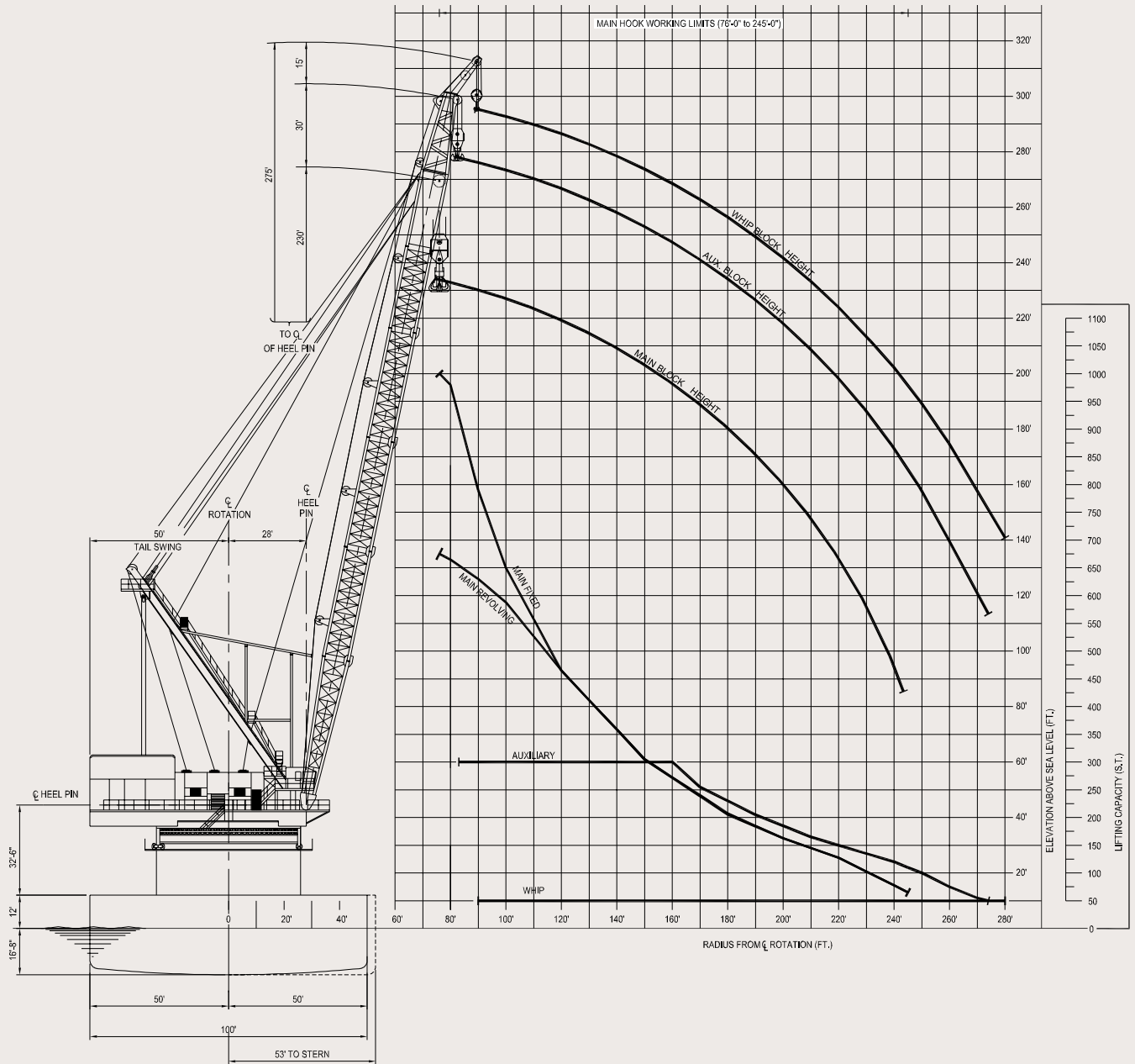




Comanche

[Derrick / pipelay vessel





Hook radius vs. lifting capacity & hook height

Specifications

Length (overall).....	401 ft (122.22 m)
Width.....	100 ft (30.48 m)
Depth.....	29 ft (8.84 m)
Classification.....	ABS A-1
Year Built.....	1969
Registry (Flag).....	Vanuatu
Operating Draft (min/max).....	14 ft (4.27 m)/19 ft (5.79 m)
Tonnage (gross/net).....	10324 gross
Max Deck Load.....	Project Specific
Free Deck Area (length x width).....	180 ft (54.86 m) x 60 ft (18.29 m)
Moon Pool (yes/no).....	no
Accommodations.....	243 people
Hospital Beds.....	2
Transit Speed (econ/max).....	Towed
Helideck Max Rating.....	20,460 lbs (9,300 kg)
Helideck Dimensions.....	72 ft x 72 ft (21.95 m x 21.95 m)
Helicopter Refueling Capacity.....	N/A

Machinery

- Main Engines..... N/A
- No. of Generators..... 5
 - Main Power..... (4) 250 kW
 - Auxiliary Power..... (1) 80 kW Emergency Generator
- No. of Compressors..... 6
 - Total Output..... 3,150 cfm (5,351.85 m³/h)
- Water Makers..... (2) Sea Recovery Reverse Osmosis
 - Total Capacity..... 158 cu. m/day

Bunker capacity

- Fuel..... 520,000 USG (1,968,200 L)
- Fresh Water..... 634,000 USG (2,399,690 L)
- Potable Water..... 690,000 USG (2,611,650 L)

Dynamic positioning..... N/A

Communication systems

- (1) VSAT
- (1) HF/SSB Transceiver
- (7) VHF/FM Marine,
- (1) VHF/FM Avionics
- (1) Inmarsat Mini M

Navigation..... N/A

Mooring equipment

- No. of Anchors; Weight (12); 26,400 lb (12,000 kg)
 - Make/Type..... Delta Flipper
- No. of Winches..... (4) Double Drum (2) Double Drum
 - Make/Type..... Clyde AD 175..... Skagit RB 150
- Wire (length/dia)..... 4,000 ft (1,219 m)/1.75 in 5,000 ft (1,524 m)/2 in

Main crane

Derrick

- Make/Model..... AmClyde/52 - DE 230 + 30 + 15
- Type..... Revolving
- Boom Length
 - Main..... 230 ft (72.85 m)
 - Auxiliary..... 260 ft (79.25 m)
 - Whip..... 275 ft (83.82 m)
- Capacity
 - Main Revolving..... 675 s. tons @ 75 ft (614 MT @ 22.86 m)
 - Main Fixed..... 1,000 s. tons @ 80 ft (907 MT @ 24.38 m)
 - Auxiliary..... 300 s. tons @ 160 ft (272 MT @ 48.77 m)
 - Whip..... 50 s. tons @ 280 ft (45 MT @ 85.34 m)

Auxiliary crane(s)

- Make/Model..... Manitowoc 4100 W/S2
- Type..... Crawler
- Boom Length..... 150 ft (45.72 m)
- Capacity..... 90 s. tons (81 MT)

Mission equipment

- Pipelay Method(s)..... Conventional S-Lay
- No. of Work Stations (@ 40 ft)..... 8
- Pipe Diameter (min/max)..... 4 in OD/60 in OD
- Tensioners (make/type)..... (2) Remacut
 - Capacity (ea./total)..... 132 kips (60,000 kg)/264 kips (120,000 kg)
- Tensioner Power Plant..... (3) CAT 3508
 - Capacity (ea./total)..... 800kW/2400 kW
- Reel Capacity (tonnage)..... N/A
- Abandon/Rec. Winch
 - Type (make/model)..... Remacut, 120 T
 - AR Wire (length/diameter)..... 5,000 ft (1,524 m)/2 ½ in
 - Capacity..... 264,000 lb (120,000 kg)
- Davits..... 5; 44 s. tons (40 MT)

Stinger

- Type..... Articulated (ballast)
- Length (min/max)..... 180 ft (3 section); 240 ft (4 section)

Pipe bury equipment..... N/A

Diving system..... Saturation system 2 (9 man)
Air Dive System 5



HEADQUARTERS

Technip

89 avenue de la Grande Armée

75773 Paris Cedex 16

France

Phone: +33 (0) 1 47 78 24 00

Technip USA, Inc.

11700 Katy Freeway - Suite 150

Houston, Texas 77079 - USA

Phone: 281-870-1111

Technip Abu Dhabi

P.O. Box 7657

Abu Dhabi - UAE

Phone: +971 2 611 6000

www.technip.com

