

DLB Chickasaw

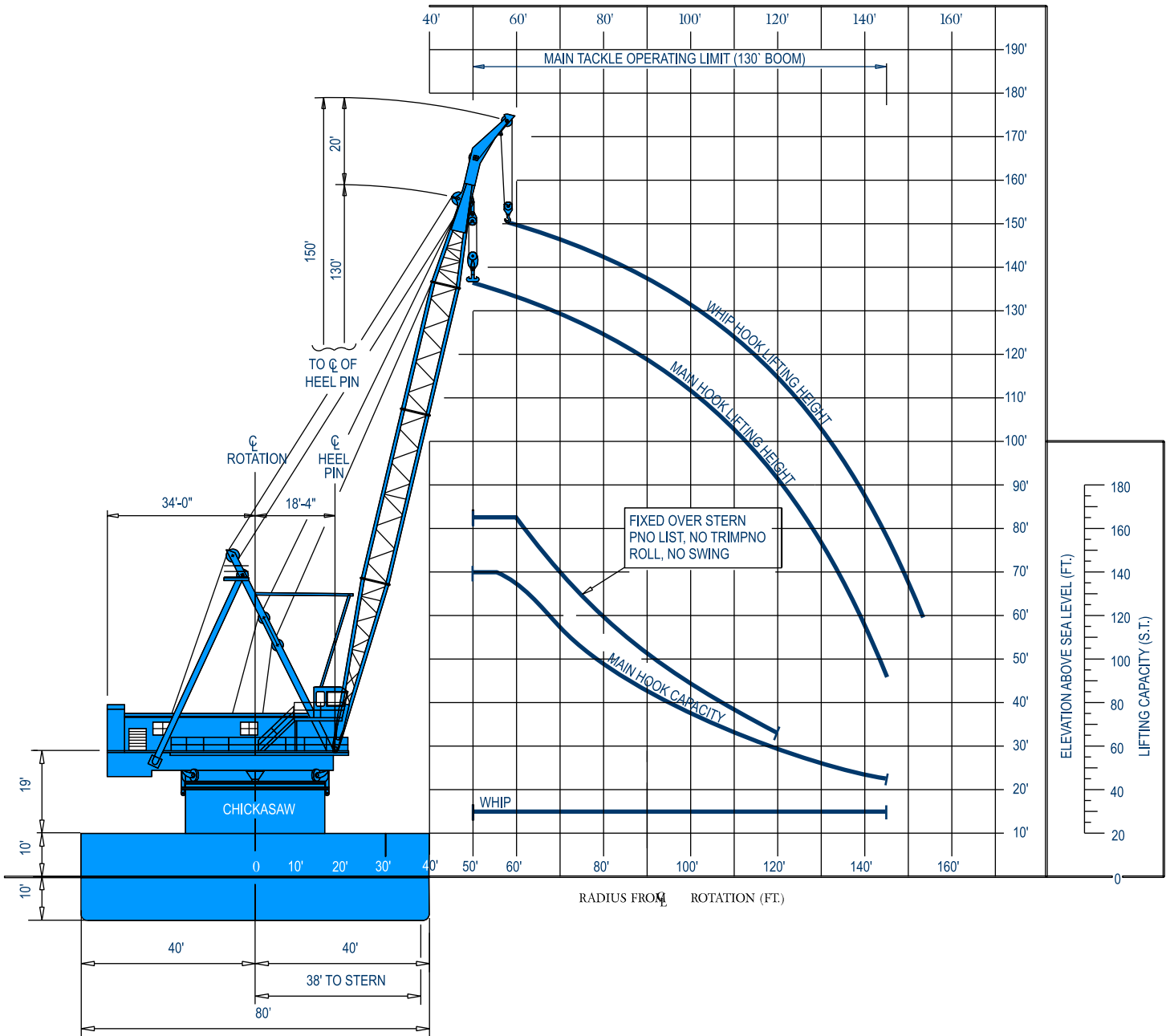


Global Industries



There's a new energy at Global.

globalind.com



HOOK RADIUS vs. LIFTING CAPACITY & HOOK HEIGHT

Pipelay Derrick Barge



GENERAL

Length (overall)275 ft (83.82 m)
 Width.....80 ft (24.38 m)
 Depth20 ft (6.10 m)
 ClassificationAll Oceans, ABS A-1
 Year Built1970
 Registry (Flag)USA
 Operating Draft (min/max)9 ft (2.74m) / 14 ft (4.27 m)
 Tonnage (gross / net)4722 / 1415
 Max Deck LoadProject Specific
 Free Deck Area (length x width)73.5 ft (22.4 m) x 49 ft (14.94 m)
 Moon Pool (yes / no)no
 Accommodations73 people
 Hospital Beds6
 Transit Speed (econ / max)Towed
 Helicopter Max rating6,200 lbs (2,812.32 kg)
 Helicopter Refueling CapacityN/A
 Helideck Dimensions40 ft (12.19 m)

MACHINERY

Main EnginesN/A
 No. of Generators4
 Main Power(2) 650 kW AC; (2) 645 kW DC
 Auxiliary PowerN/A
 No. of Compressors(1) 125 psi
 Total Output750 cfm (1,274.25 m³/h)
 Water MakersN/A
 Total CapacityN/A

BUNKER CAPACITY

Fuel60,000 USG (227,100 L)
 Fresh WaterN/A
 Potable Water100,000 USG (378,500 L)

DYNAMIC POSITIONING

DP ClassN/A
 DP System.....Nautronix ASK4002 w/dual redundant controls
 Thrusters (2) Bow (2) Stern
 Type Th500 Retractable HRP 600L Retractable
 Power 550 hp ea 750 hp ea.
 Total DP Power2,600 hp

COMMUNICATION SYSTEMS

Telephone, VHF Radios, Satellite Phone,
 E-mail & Fax, Client Internet

NAVIGATION

Radar-Furuno Navnet 1943 C/NT, AIS-GPS; AIS Satellite Compass

MOORING EQUIPMENT

No. of Anchors; Wt (3); 20,000 lb (9,072 kg) (1) 10,000 lb (4,536 kg)
 Make, type Delta Flipper Delta Flipper
 No. of Winches2
 Make, typeAmerican 480 B
 Wire (length/diameter)2,500 ft (762 m) / 1.5 in

MAIN CRANE

Derrick
 Make, ModelClyde 32
 TypeRevolving
 Boom Length
 Main130 ft (39.62 m)
 AuxiliaryN/A
 Whip150 ft (45.72 m)
 Capacity
 Main Revolving127 s. tons @ 50 ft (115 MT @ 15.24 m)
 Main Fixed165 s. tons @ 50 ft (149.7 MT @ 15.24 m)
 AuxiliaryN/A
 Whip30 s. tons @ 45 ft (27.2 MT @ 13.72 m)

AUXILIARY CRANE(s)

Make, Model & TypeN/A

MISSION EQUIPMENT

Pipelay Method(s)Reel S-Lay
 No. of Work Stations (@ 40 ft)3
 Pipe Diameter (min/max)4 in / 12 in
 Tensioners (make, type)N/A
 Total Capacity (each/total)N/A
 Reel Capacity (tonnage)2,500 s. Tons (2,267 MT)

| Diameter | Capacity (mi) | Capacity (km) |
|----------|---------------|---------------|
| 4 | 45.27 | 72.8847 |
| 6 | 19.13 | 30.7993 |
| 8 | 11.55 | 18.5955 |
| 10 | 5.68 | 9.1448 |
| 12 | 3.79 | 6.1019 |

Abandon/Rec. Winch
 Type (make/model)Smatco
 AR Wire (length/diameter)7,000 ft (2,133.6 m) / 2 in
 Capacity200,000 lb (90,720 kg)
 DavitsN/A

STINGER

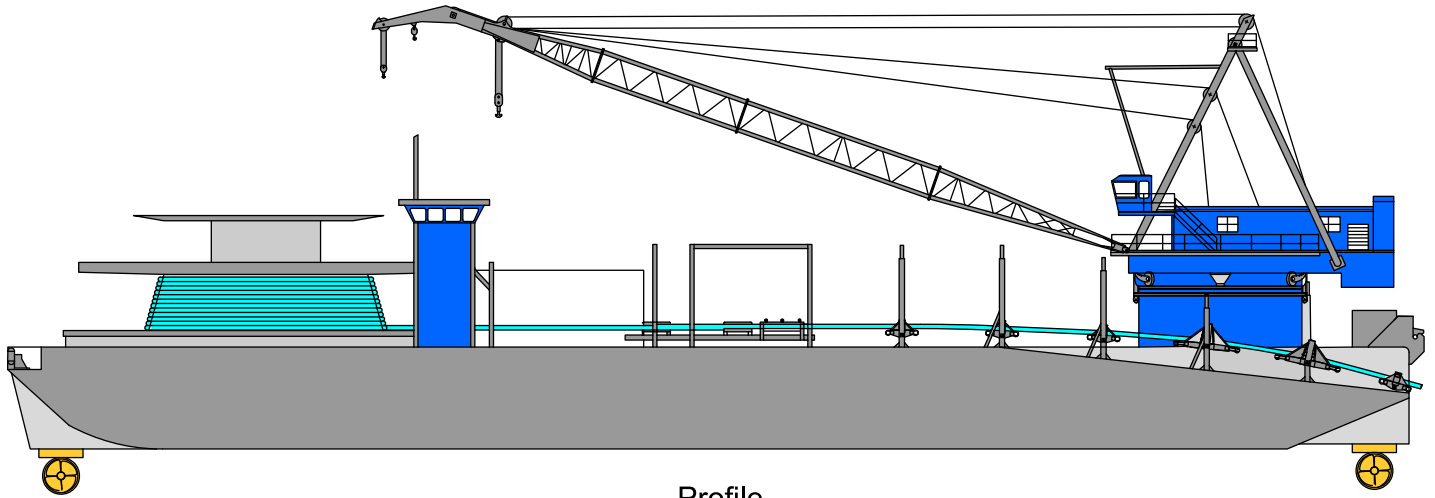
TypeFixed and Articulate
 Length (min/max)40 ft (12.192 m) & 100 ft (30.48 m) Articulate;
100 ft (30.48 m) Fixed

PIPE BURY EQUIPMENT

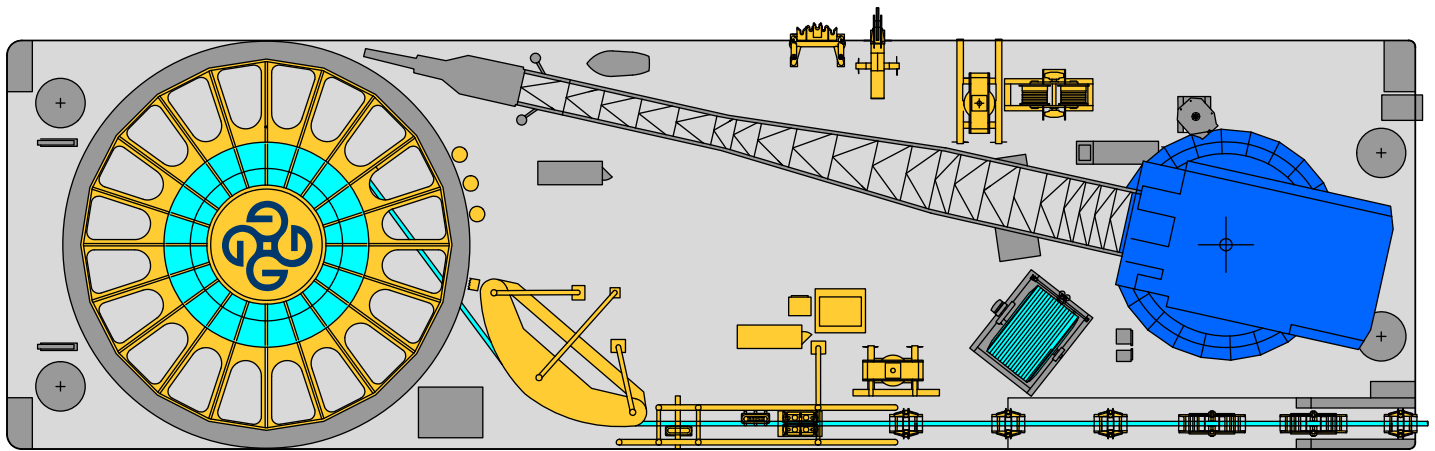
.....N/A

DIVING SYSTEM

.....N/A



Profile



Plan



globalind.com

Operations

8000 Global Drive
Carlyss, LA 70665 USA
Tel +1.337.583.5000
Fax +1.337.583.5100

Business Development

11490 Westheimer, Suite 400
Houston, TX 77077 USA
Tel +1.281.529.7979
Fax +1.281.529.7980