

# Asiaflex Installer

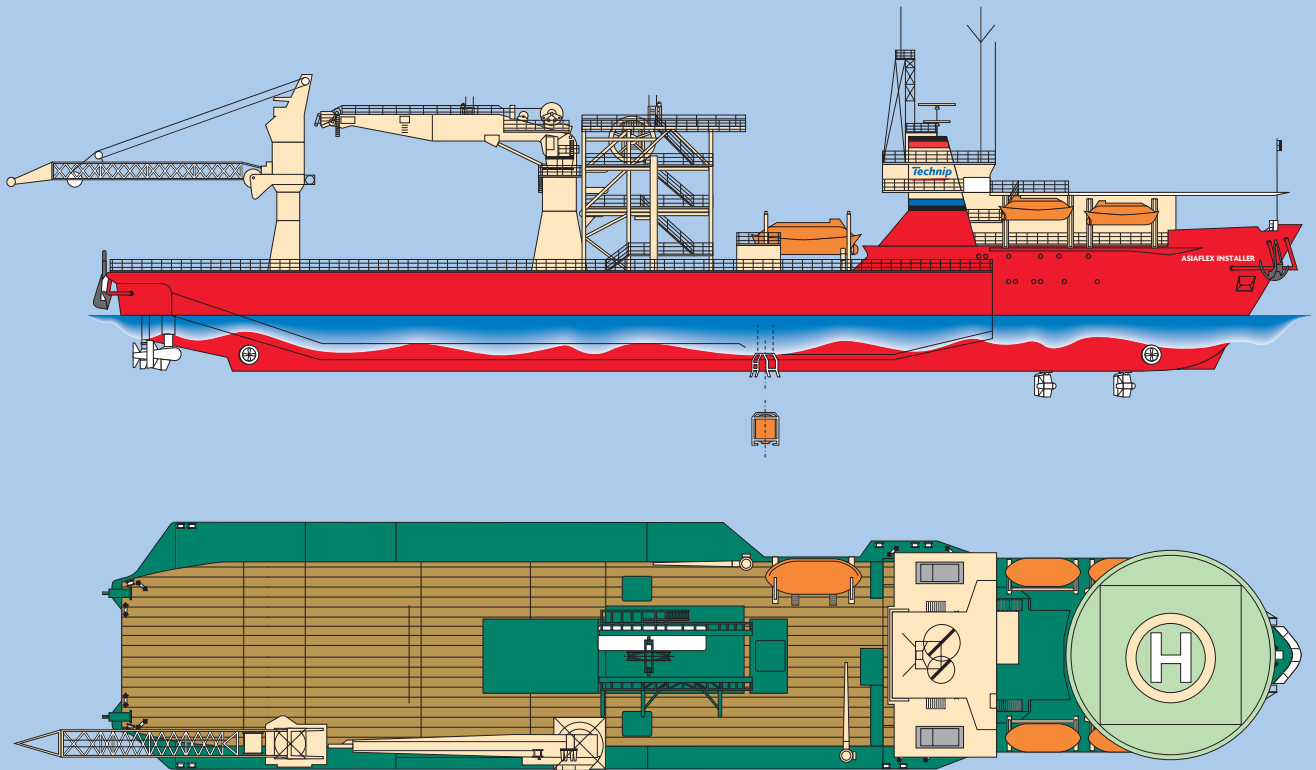
Dynamically positioned, monohulled construction class diving support vessel



**Technip**

*take it further.*

# Asiaflex Installer

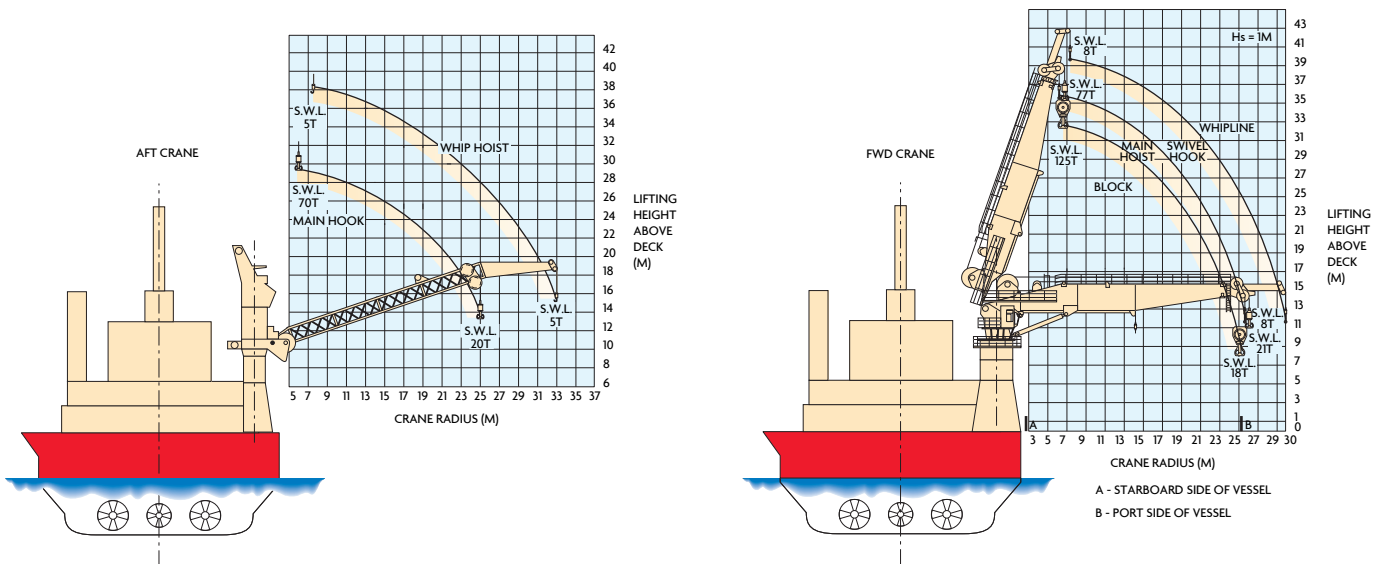


The Asiaflex Installer is a dynamically positioned, monohulled construction class diving support vessel, and was the first purposely converted vessel for FPSO and SBM installation.

## Capabilities

The vessel has unique characteristics in terms of size and versatility that enable it to perform a wide range of construction tasks. It has more than 1,700 m<sup>2</sup> of open deck space and can carry 2,500 Te of anchor chain in below deck storage. This enables a full range of FPSO installation equipment to be carried simultaneously such as flexible pipeline/umbilical reels, permanent

mooring anchors, wire rope reels, buoys, ROVs etc. The Asiaflex Installer is capable of installing and pre-tensioning anchor systems up to a maximum of 1,000 Te load. The Asiaflex Installer's crange capacity and configuration, coupled with her free deck space enables the vessel to install long and multidimensional spool pieces with unequalled efficiency. The height of



## Specifications

### Principal dimension

Length overall	129.10 m
Length between pp	115.68 m
Breadth overall	24.60 m
Depth moulded	10.70 m

### Operating draft

4.50 m - 6 m, plus thrusters project 3 m below hull (depending on loading conditions)

### Displacement

11,782 Te at 6.0 m draft

### Gross tonnage

8,300 Te

### Craneage

#### Main lifting facility - starboard side

- 1 x Pedestal crane aft  
70/20 Te at 10/25 m radius  
Max wire length 400 m  
Whip line 10 Te at 33 m radius  
Max wire length 400 m
  - 1 x Pedestal crane forward  
155\*/34 Te at 6.5/26 m radius  
Max wire length 430 m  
Whip line 8 Te at 36 m radius  
Max wire length 430 m
- \* Double fall

### Additional lifting facilities

Starboard 5 Te at 10 m radius

### Deck space

1,700 m<sup>2</sup>  
Working moon pool 11.3 m x 2.7 m  
Suitable for fitting modular VLS as shown on page 2.

### Deck load

10 Te/m<sup>2</sup>  
Max overall 3,000 Te

### Capacities

- Fuel oil 850 m<sup>3</sup>
- Fresh water 659 m<sup>3</sup>
- Chain lockers 2,530 Te

### Deck services

- 2 x 15,900 l/min air compressors at 8 bar
- 1 x 120 l/min sea water pump

### DP system

- Kongsberg SDP 22

### Reference systems

- Simrad hydroacoustic HiPAP 350 and HiPAP 500
- 2 x Taut wires
- 3 x DGPS
- 1 x Laser fan beam

### Environmental Regulatory Number

99.99.93

### Power plant

5 x MAK diesel engines 1,290 kW  
Total power production 6,450 kW

### Propulsion

#### Forward

- 2 x Azimuth thrusters 1,100 kW each
- 1 x Tunnel thruster 590 kW

#### Aft

- 2 x Azimuth thrusters 1,620 kW each
- 1 x Azimuth thruster 1,550 kW
- 1 x Tunnel thruster 590 kW

### Bollard pull

80 Te

### Endurance

Max period

- Between portcalls 36 days
- FW making capacity 60 Te/24 hrs
- Fuel consumption (typical)
  - In port 5 m<sup>3</sup>/day
  - In transit 23 m<sup>3</sup>/day
  - DP 10 m<sup>3</sup>/day

### Service speed

8.5 knots

### Helideck

S92

### Accommodation

98 people in 50 cabins

### Lifesaving appliances

- Lifeboats 2 x 48 person
- Life rafts 2 x 50 person
- 8 x 25 person

### Diving system

- Depth rating 300 msw
- No. in sat 16
- No. of bells 1
- Bell volume 4.5 m<sup>3</sup>
- System volume 102 m<sup>3</sup>
- Gas storage 7,800 m<sup>3</sup> at 200 bar

Diver reclaim fitted

- SPHL Type: enclosed, self-launched, self-driven
- Capacity 16 divers, 3 crew

### Flag

Bahamas

### Call sign

C6MW3

### Classification

DNV+1A1, DSVIISF, DYNPOS (AUTR), EO, HELDK, SF

### Year built/builder

- 1981 by Weft Nobiskrug GMBH
- 1995 converted by Pan United

the cranes permits platform access and also installation of rigid steel risers using the 'stalk on' method, whilst main-taining station on DP. The vessel's extensive deck storage, together with its large crane capacity and economical operation in all modes, makes the Asiaflex Installer an exceptional solution to subsea development and FPSO project requirements, including:

- Floating production system installations
- Flexible flowline laying, recovery and repairs
- Umbilical laying, recovery and repairs
- Spool piece installation and tie-ins
- Subsea pipeline repairs
- Pigging and testing
- Hookup services and support
- Platform and riser repairs
- SBM installations, repairs and removal

### Diving system

The saturation diving system is capable of supporting a total of 16 divers in 4 living chambers allowing for split-level diving. The system is rated to 300 msw.

The 3-man bell is launched and recovered through a centerline moonpool. A containerised air diving system and associated winches and A-frame can readily be fitted on deck to existing connections. The vessel has a davit launched, selfpropelled hyperbaric lifeboat for 16 divers and 3 crew.

### Craneage

The Asiaflex Installer is fitted with two pedestal mounted cranes on the starboard side of the main deck. The forward crane is a Hydralift with 155/34 Te capacity at 6.5/26 m radius and the aft crane is a Liebherr with 70/20 Te capacity at 10/25 m radius. Both cranes can operate subsea to 300 m. There is also one service crane with a 5 Te capacity on the starboard side.

### Working areas

The main deck has an exceptionally large flat working area of 1,700 m<sup>2</sup> with a loading capacity of 10 Te/m<sup>2</sup>. The maximum overall load is 3,000 Te. There is a 11.3 m x 2.7 m working moonpool.

### Dynamic positioning system

The Asiaflex Installer is fitted with a

fully redundant DP2 Kongsberg dynamic positioning system. The system accepts position references from two taut wires, a HiPAP 500 and HiPAP 350 hydroacoustic system, three independent DGPS reference systems and a laser fan beam.

### Machinery/propulsion

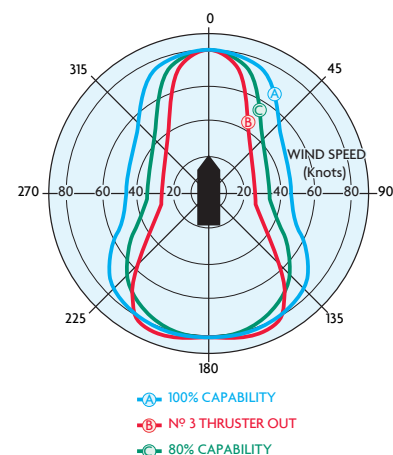
The vessel is powered by 5 diesel engines, each driving a generator located in two separate engine rooms

and providing a total of 6,450 kW. The propulsion system consists of three azimuth and one tunnel thruster aft and two azimuth and one tunnel thruster forward.

### Accommodation

Accommodation is provided for 98 people in modern, fully air-conditioned cabins. There are also office facilities, a conference room and recreation rooms.

DP Capability Plot





#### HEADQUARTERS

##### **Technip**

89 avenue de la Grande Armée  
75773 Paris Cedex 16  
France  
Phone: +33 (0)1 47 78 24 00

#### CONTACTS

##### **Technip Oceania Pty Ltd**

Robert GILLESPIE, Subsea Business  
Acquisition Manager

1100 Hay Street  
West Perth, WA 6005  
Australia  
Phone: +61 8 9463 2500  
Fax: +61 8 9463 2501  
Email: [technipperth@technip.com](mailto:technipperth@technip.com)

##### **Technip Geoproduction (M) Sdn Bhd**

Paul McCAFFERTY, Subsea Sales &  
Business Development Manager

2nd Floor, Wisma Technip  
241 Jalan Tun Razak  
50400 Kuala Lumpur  
Malaysia  
Tel: +603 2119 5555  
Fax: +603 2144 3649  
Email: [pmccafferty@technip.com](mailto:pmccafferty@technip.com)

[www.technip.com](http://www.technip.com)